

# THE MAIDFORD

*Bowman Alt Facade*

HUNTER  
HOMES



165

# THE MAIDFORD

*Bowman Alt Facade*

## Description

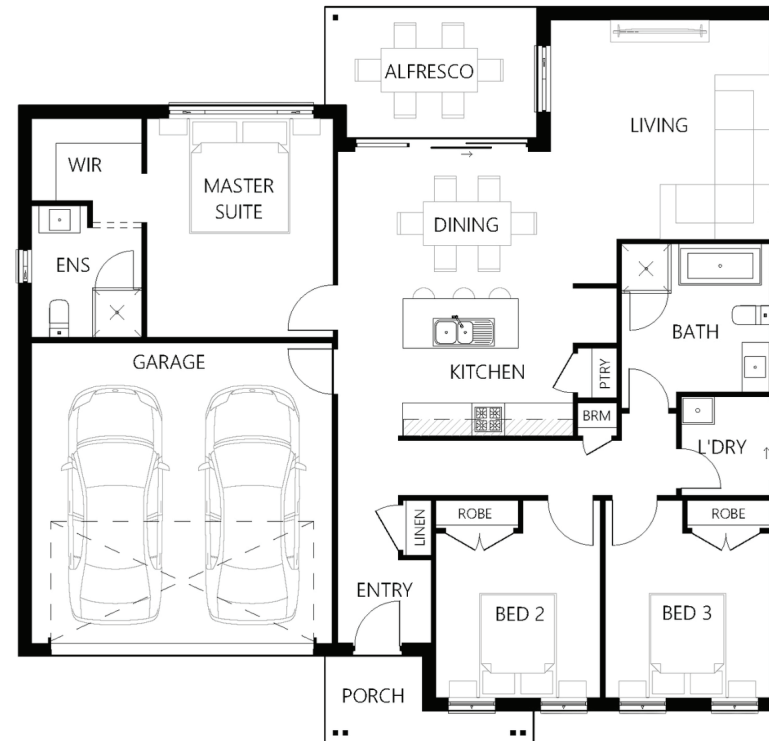
The Maidford 165 has been designed for integrated living. The master suite is situated at the rear of the home with a generous ensuite and walk in robe. The two remaining bedrooms are located at the front of the home with their own private bathroom off the connecting hallway with access to the laundry. The open planned design has a large living area and a galley style kitchen with an island bench that overlooks the dining. Connecting the indoor with outdoors, the alfresco is located off the dining area which is ideal for entertaining guests. This home design opens to dual living and corner block configurations.

<b>Bedrooms</b>	3
<b>Bathrooms</b>	2
<b>Car Garage</b>	2

<b>Total m<sup>2</sup></b>	165.9
<b>Total sqs</b>	17.86
<b>Width (m)</b>	13.95
<b>Length (m)</b>	13.45

# 165

[hunterhomesnsw.com](http://hunterhomesnsw.com)



Floor plan not drawn to scale

