

# HUNTER HOMES

live WITH HEART 



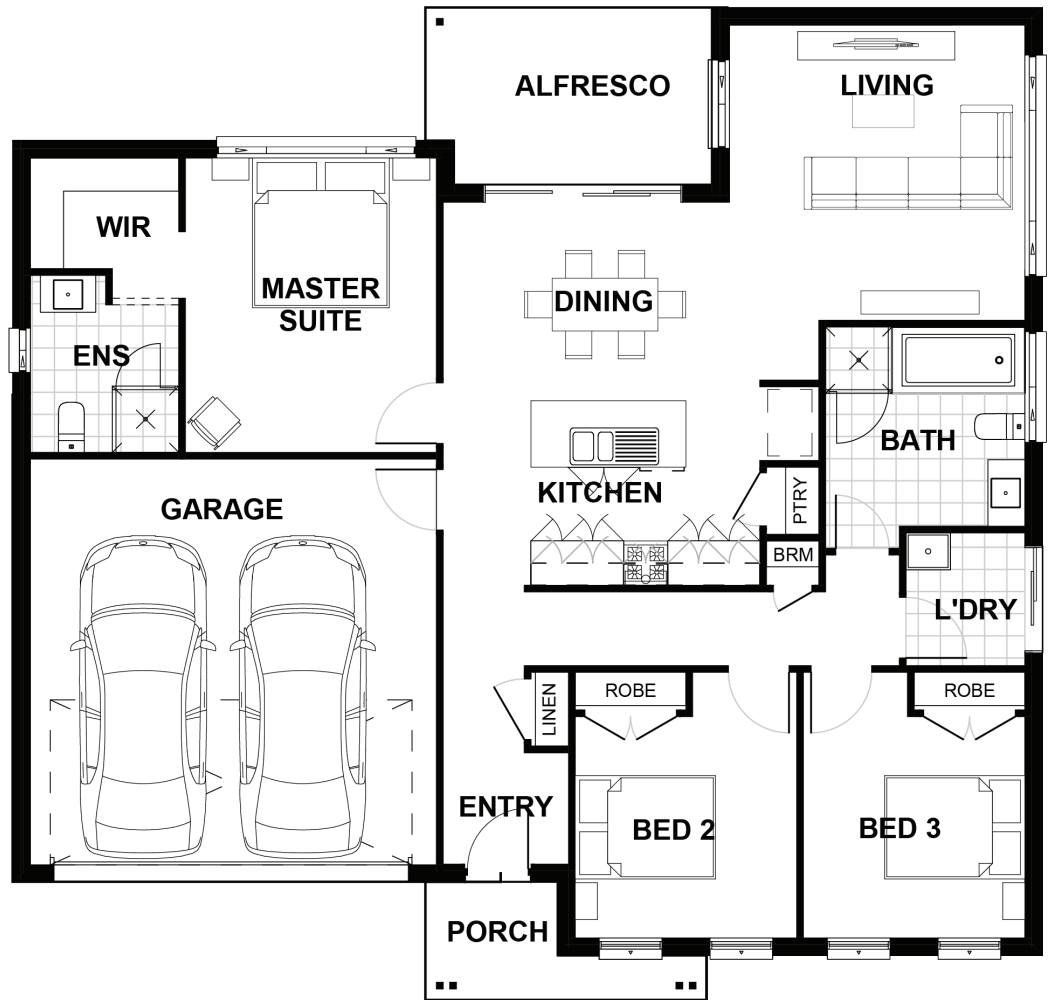
## BOWMAN ALT FACADE



Total (sqsq.)	17.86	Width (m)	13.95
Total (m <sup>2</sup> )	165.9	Length (m)	13.45

### Description

The Maidenford 165 has been designed for integrated living. The master suite is situated at the rear of the home with a generous ensuite and walk in robe. The two remaining bedrooms are located at the front of the home with their own private bathroom off the connecting hallway with access to the laundry. The open planned design has a large living area and a galley style kitchen with an island bench that overlooks the dining. Connecting the indoor with outdoors, the alfresco is located off the dining area which is ideal for entertaining guests. This home design opens to dual living and corner block configurations.



**Terms and Conditions:** Images shown on this brochure are approximate and for illustration purposes only, these plans may not be drawn to scale. Façades and other images on this brochure may be shown as optional upgrades or not included, additional fixtures and finishes that are featured on this document may not be included in the base cost such as landscaping, tiling, decking, furniture, feature lighting, pools, driveways etc. Hunter Homes reserves the right to change plans and inclusions at any time. All designs that are developed remain the property of Hunter Homes Pty Ltd under copyright law & we retain & claim all rights to these plans. Changing plans by 50% or more does not avoid legal responsibility for a copyright breach.

Maidenford 165

1300 BUY HOME

See our website for Display locations  
[www.hunterhomesnsw.com](http://www.hunterhomesnsw.com)

love YOUR HUNTER HOME