

# THE STANFORD

*Hillsborough Facade*

HUNTER  
HOMES



202

# THE STANFORD

Hillsborough Facade

## Description

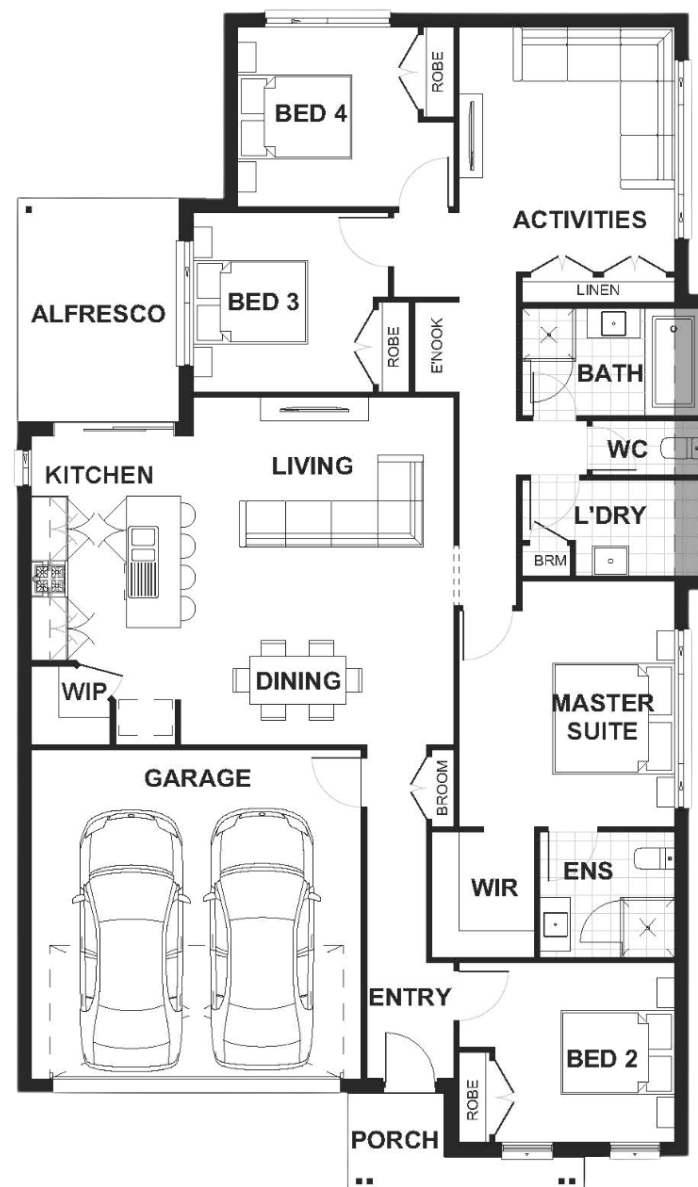
The Stanford 202 combines space, practicality, and privacy. The four bedrooms include a teenager's retreat located at the front of the home with a grand master suite complete with a walk in wardrobe and good size ensuite, which is tucked away off the main living/dining area proving additional privacy. The remaining two bedrooms are adjacent to the substantial size activities room and includes a functioning electrical nook for all those home tech devices. The open plan living area is central to the home with a galley style kitchen, walk-in pantry and island bench overlooking the living and dining areas. This area connects to a versatile alfresco which is ideal for indoor and outdoor living.

Bedrooms	4
Bathrooms	2
Car Garage	2

Total m <sup>2</sup>	202.29
Total sqs	21.78
Width (m)	11.66
Length (m)	19.71

# 202

[hunterhomesnsw.com](http://hunterhomesnsw.com)



Floor plan not drawn to scale

