

THE LAKES

Bolton Facade

HUNTER
HOMES



247

THE LAKES

Bolton Facade

Description

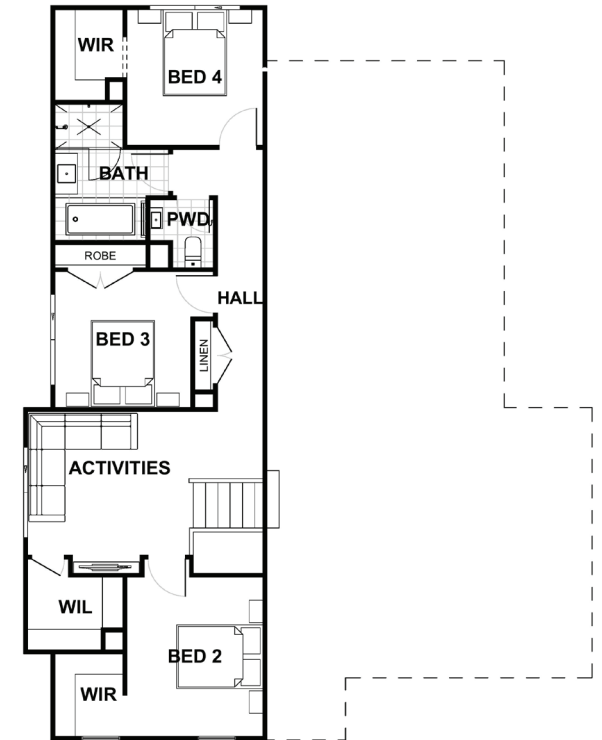
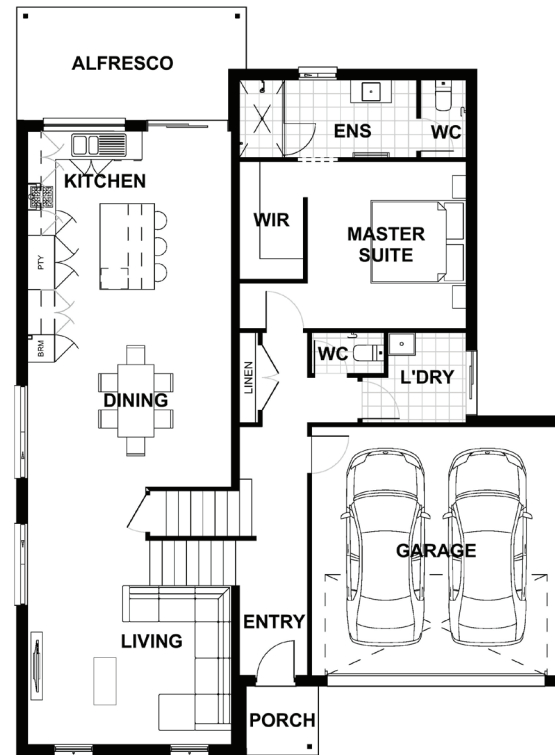
The Lakes 245 is one of our side split designs perfect for a side sloping block. Upon entering the home the master suite is located at the rear which offers a spacious ensuite grand in size with a walk in robe. Stairs will lead you down to the ground floor which is the main hub of the home with a magnificent open plan design featuring an integrated living area, dining, and a galley kitchen with a large island bench. The kitchen includes a splashback window which overlooks the alfresco. The top floor includes three additional bedrooms two of which include walk in robes. This floor also offers an activities room allowing for additional entertaining.

Bedrooms	4
Bathrooms	2
Car Garage	2

Total m ²	248.77
Total sqs	26.78
Width (m)	12.25
Length (m)	16.53

247

hunterhomesnsw.com



Floor plan not drawn to scale

