

THE HIGHLAND

Summerhill Facade V2

HUNTER
HOMES



157

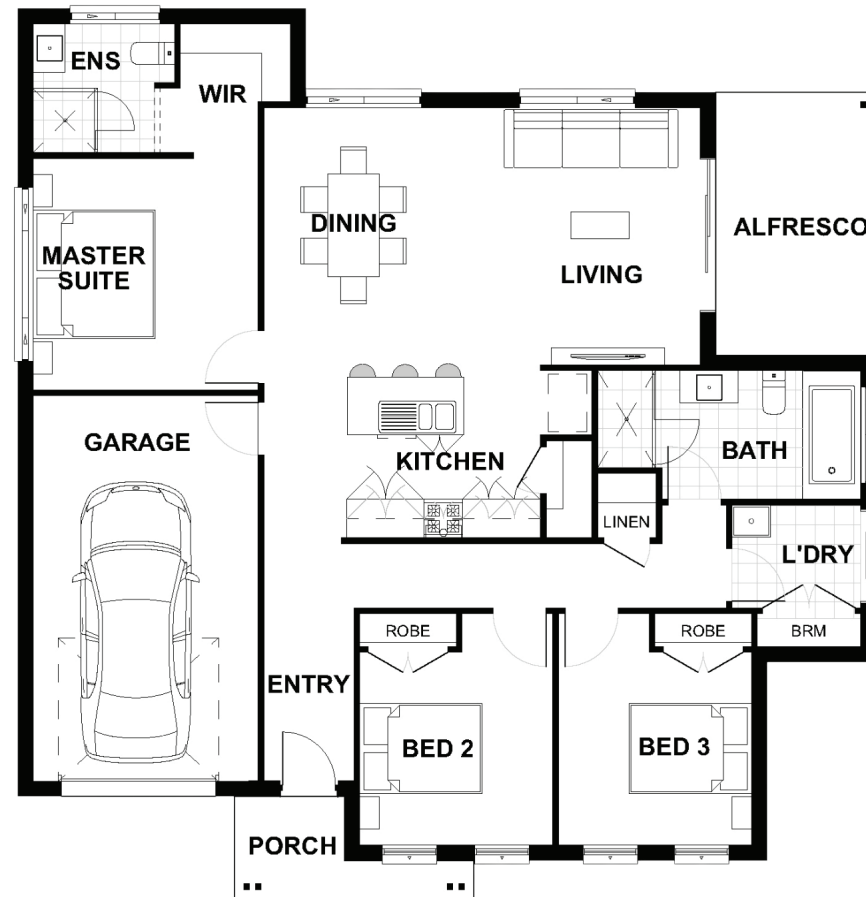
THE HIGHLAND

Summerhill Facade V2

Description

The Highland 157 is a great home designed for the first home buyer and or those wishing to downsize. The master suite is situated at the rear with a spacious ensuite and walk in robe. The two remaining bedrooms are located at the front of the home with their own private bathroom off the connecting hallway with access to the laundry. The galley style kitchen with an island bench overlooks the dining and living area which opens to a generous alfresco which is perfect for entertaining. This home design opens to dual living and corner block configurations.

Bedrooms	3
Bathrooms	2
Car Garage	1
<hr/>	
Total m ²	156.8
Total sqs	16.88
Width (m)	13.76
Length (m)	13.67



157

hunterhomesnsw.com

Floor plan not drawn to scale

