

# THE SIENNA

*Pearson Facade*

HUNTER  
HOMES



219

# THE SIENNA

Pearson Facade

## Description

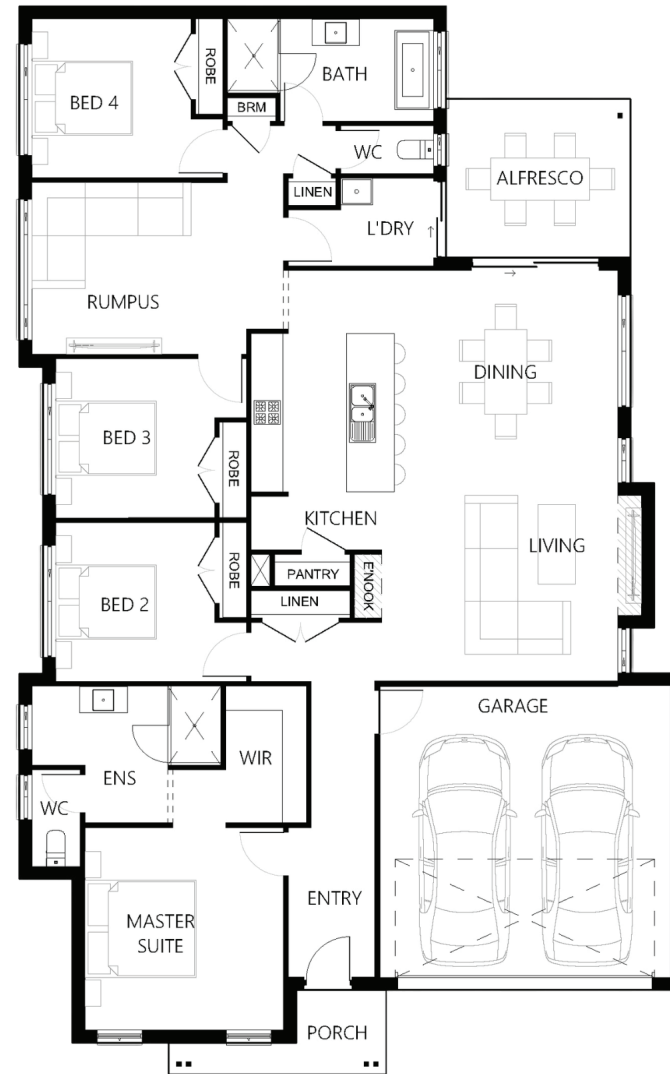
The Sienna 219 has dual living zones for the family to enjoy! With a master suite located at the front of the home, including a spacious walk in robe and generous sized ensuite, this makes a perfect parent retreat. The heart of the home features the open plan living / dining area, overlooked by a stylish kitchen with an island bench and oversized pantry. The three bedrooms are well located within the home, easily accessing all areas.

<b>Bedrooms</b>	4
<b>Bathrooms</b>	2
<b>Car Garage</b>	2

<b>Total m<sup>2</sup></b>	219.12
<b>Total sqs</b>	23.59
<b>Width (m)</b>	12.54
<b>Length (m)</b>	20.17

# 219

[hunterhomesnsw.com](http://hunterhomesnsw.com)



Floor plan not drawn to scale

