

# HUNTER HOMES

live WITH HEART 



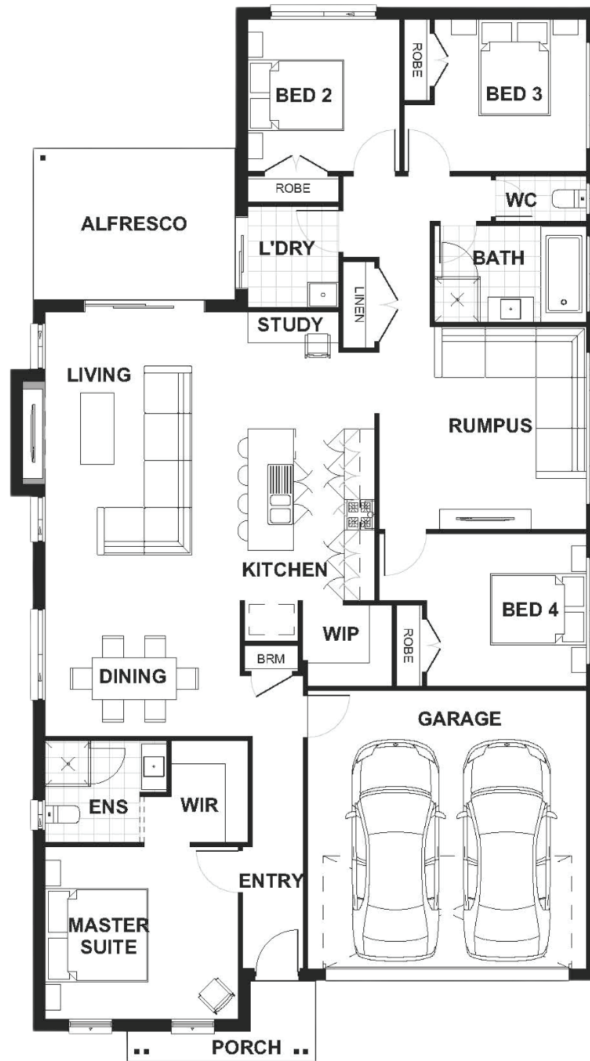
## BOWMAN FACADE



Total (sq.s.)	22.86	Width (m)	11.61
Total (m <sup>2</sup> )	212.33	Length (m)	20.82

### Description

The Dunmore 212 has been designed for any modern family. The home has four bedrooms with the master suite situated at the front of the home with a walk in robe and ensuite. The remaining bedrooms are located at the rear with a private Bathroom off the rumpus which is ideal for a teenager's retreat. The open plan living/dining has a study area which is ideal for any growing family with an alfresco located off the living room perfect for entertaining. The kitchen has a generous island bench with a walk-in pantry. This home is ideal for any growing family.



**Terms and Conditions:** Images shown on this brochure are approximate and for illustration purposes only, these plans may not be drawn to scale. Façades and other images on this brochure may be shown as optional upgrades or not included, additional fixtures and finishes that are featured on this document may not be included in the base cost such as landscaping, tiling, decking, furniture, feature lighting, pools, driveways etc. Hunter Homes reserves the right to change plans and inclusions at any time. All designs that are developed remain the property of Hunter Homes Pty Ltd under copyright law & we retain & claim all rights to these plans. Changing plans by 50% or more does not avoid legal responsibility for a copyright breach.

1300 BUY HOME

See our website for Display locations  
[www.hunterhomesnsw.com](http://www.hunterhomesnsw.com)

love YOUR HUNTER HOME

Dunmore 212