

# HUNTER HOMES

live WITH HEART 



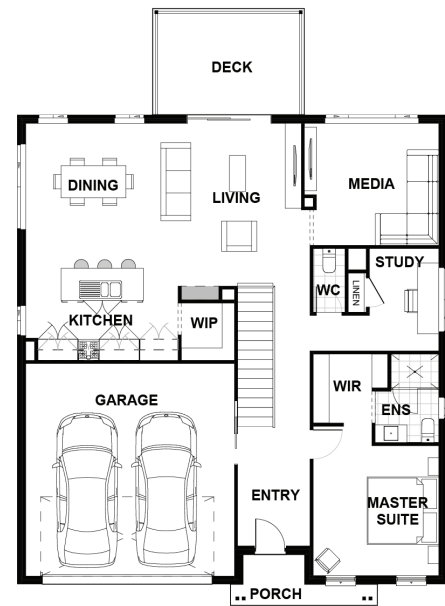
## QUARTZ FACADE



Total (sq.s.)	29.91	Width (m)	12.16
Total (m²)	277.87	Length (m)	16.86

### Description

Versatile living at its finest accommodating narrow sites configuration and suites a downward slopping block, the Quarry was designed to include multiple living areas making this the perfect home for a growing family. The private and spacious master suite is located at the front of the home complete with a walk in robe and ensuite. Located towards the rear you will find a generous home office with a separate powder room. The open plan living with island bench kitchen and walk in pantry overlooks the dining and living area which opens to the deck. Designed for entertaining the media room is also located on this level. Downstairs you will be greeted with a palatial rumpus room leading to the alfresco. The rumpus is surrounded by three additional bedrooms making this the perfect hub for teenagers or guests.



**Terms and Conditions:** Images shown on this brochure are approximate and for illustration purposes only, these plans may not be drawn to scale. Façades and other images on this brochure may be shown as optional upgrades or not included, additional fixtures and finishes that are featured on this document may not be included in the base cost such as landscaping, tiling, decking, furniture, feature lighting, pools, driveways etc. Hunter Homes reserves the right to change plans and inclusions at any time. All designs that are developed remain the property of Hunter Homes Pty Ltd under copyright law & we retain & claim all rights to these plans. Changing plans by 50% or more does not avoid legal responsibility for a copyright breach.

1300 BUY HOME

See our website for Display locations  
[www.hunterhomesnsw.com](http://www.hunterhomesnsw.com)

love YOUR HUNTER HOME

Quarry 277