

# HUNTER HOMES

live WITH HEART 



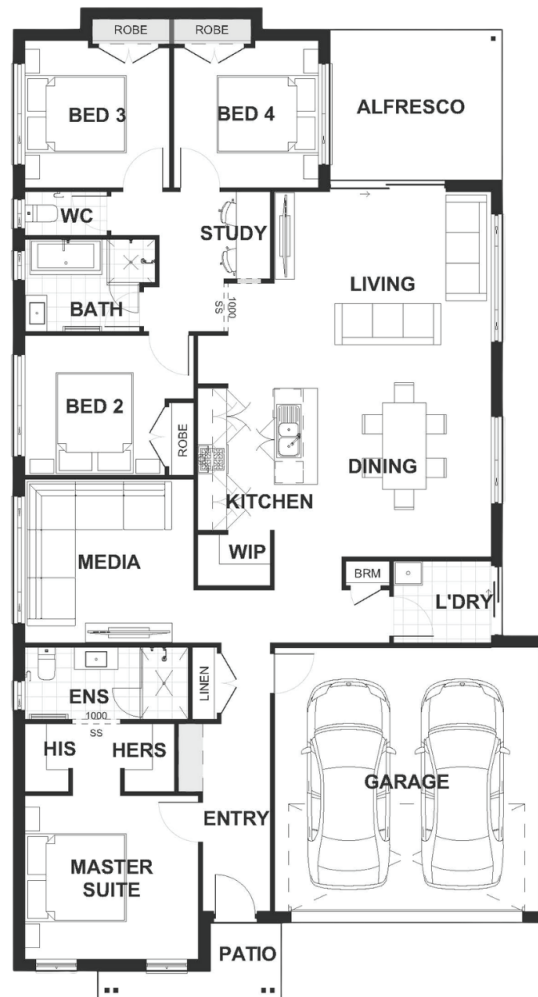
## HILLSBOROUGH FACADE



Total (sq.s.)	21.99	Width (m)	11.16
Total (m <sup>2</sup> )	204.3	Length (m)	20.18

### Description

The Chelsea 204 has been designed to maximise space. The master suit is situated at the front of the home with a generous walk through his and her wardrobe leading into the ensuite. The media room is located off the entry hallway with the three remaining bedrooms located at the rear of the home, complete with family bathroom and study nook that can be closed off from the open plan living/dining. The galley style kitchen, with a walk in pantry and island bench, overlooks the dining and living area which opens to a great sized alfresco.



**Terms and Conditions:** Images shown on this brochure are approximate and for illustration purposes only, these plans may not be drawn to scale. Façades and other images on this brochure may be shown as optional upgrades or not included, additional fixtures and finishes that are featured on this document may not be included in the base cost such as landscaping, tiling, decking, furniture, feature lighting, pools, driveways etc. Hunter Homes reserves the right to change plans and inclusions at any time. All designs that are developed remain the property of Hunter Homes Pty Ltd under copyright law & we retain & claim all rights to these plans. Changing plans by 50% or more does not avoid legal responsibility for a copyright breach.

1300 BUY HOME

See our website for Display locations  
[www.hunterhomesnsw.com](http://www.hunterhomesnsw.com)

love YOUR HUNTER HOME

Chelsea 204