

THE ALPINE

Wiseman Facade

HUNTER
HOMES



220

THE ALPINE

Wiseman Facade

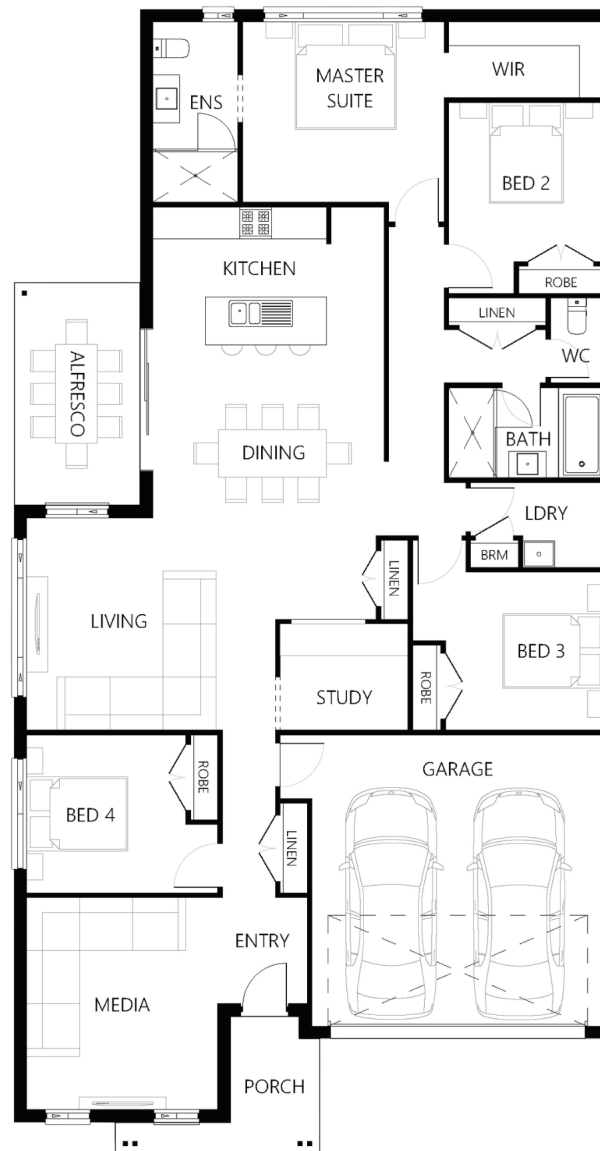
Description

The Alpine 220 is a home that draws everyone together. The large open plan living and dining space joins seamlessly to the spacious alfresco. Perfect for entertaining friends, it is also a welcoming area for the family to spend time together. The media room creates an additional living space away from the hub of the home which has been cleverly located at the front of the house. The master suite is located at the rear of the home with a spacious walk in robe and cleverly designed ensuite. With three additional bedrooms including a room off the front hallway this home combines easy family living with plenty of practicality.

Bedrooms	4
Bathrooms	2
Car Garage	2
<hr/>	
Total m ²	219.86
Total sqs	23.67
Width (m)	11.36
Length (m)	21.6

220

hunterhomesnsw.com



Floor plan not drawn to scale

