

THE JESMOND

Fullerton Facade

HUNTER
HOMES



246

THE JESMOND

Fullerton Facade

Description

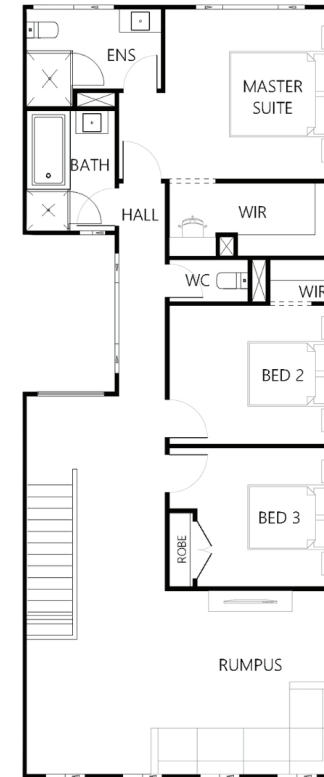
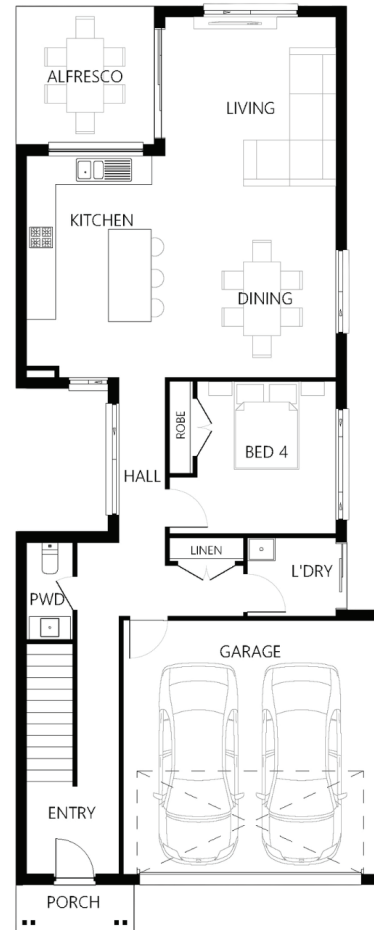
A perfect design for a guest retreat, the Jesmond 246 is ideal for those looking for multiple sleeping zones. On the main level you will find a separate bedroom off the hallway leading to the open plan living and dining area which can be used as a guest room. The kitchen has been designed to maximise space and includes an island bench with a splashback window looking out to the alfresco drawing additional light. The second level includes three additional bedrooms with the master suite located towards the rear with a private ensuite and ginormous walk in wrap around wardrobe. On this level you will find a rumpus room which can be converted into another living area for the family to enjoy all year round.

Bedrooms	4
Bathrooms	2
Car Garage	2

Total m²	246.54
Total sqs	26.54
Width (m)	8.07
Length (m)	20.05

246

hunterhomesnsw.com



Floor plan not drawn to scale

