

THE CASSA

Belmore Facade

HUNTER
HOMES



220

THE CASSA

Belmore Facade

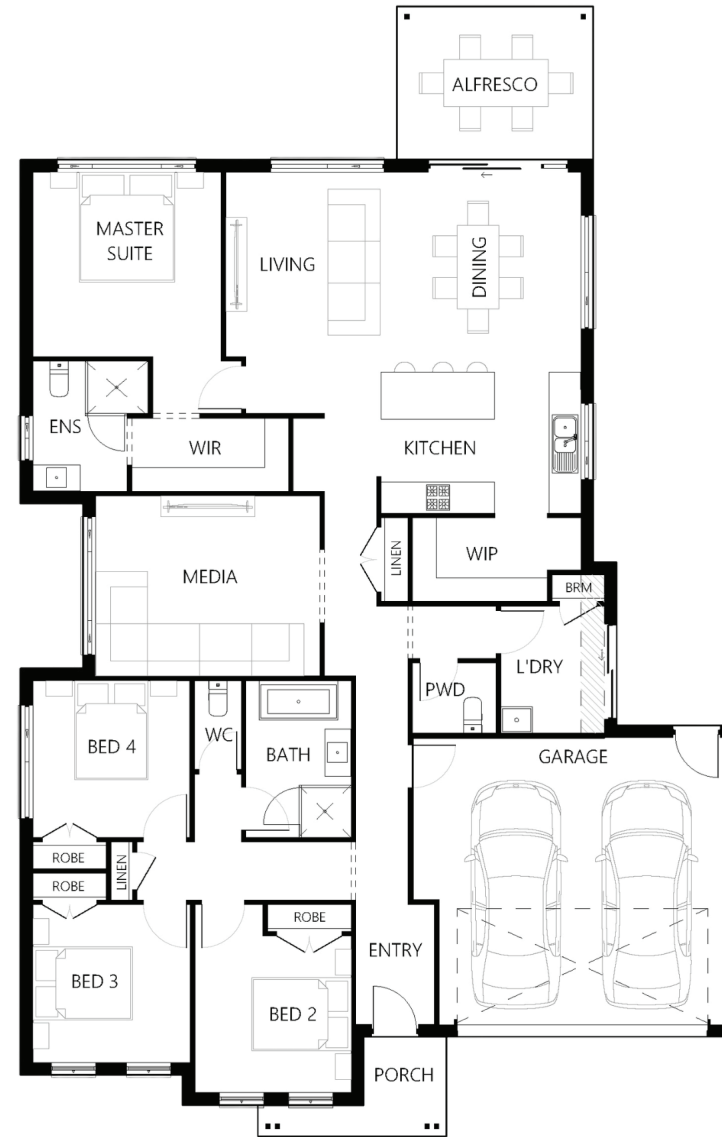
Description

The Cassa 220 is the perfect family home. The master suite is located at the rear of the home with a spacious walk in robe and ensuite. The three bedrooms are all located at the front of the home which create their own sleeping quarters and are connected to the family bathroom. The open plan dining and living area flow seamlessly to the large alfresco which allows for the perfect blend of both indoor and outdoor living. With a kitchen complete with an oversized island bench and a walk in pantry this home is an entertainers delight!

Bedrooms	4
Bathrooms	2
Car Garage	2
<hr/>	
Total m²	220.29
Total sqs	23.71
Width (m)	13.75
Length (m)	21.68

220

hunterhomesnsw.com



Floor plan not drawn to scale

