

HUNTER HOMES

live WITH HEART 



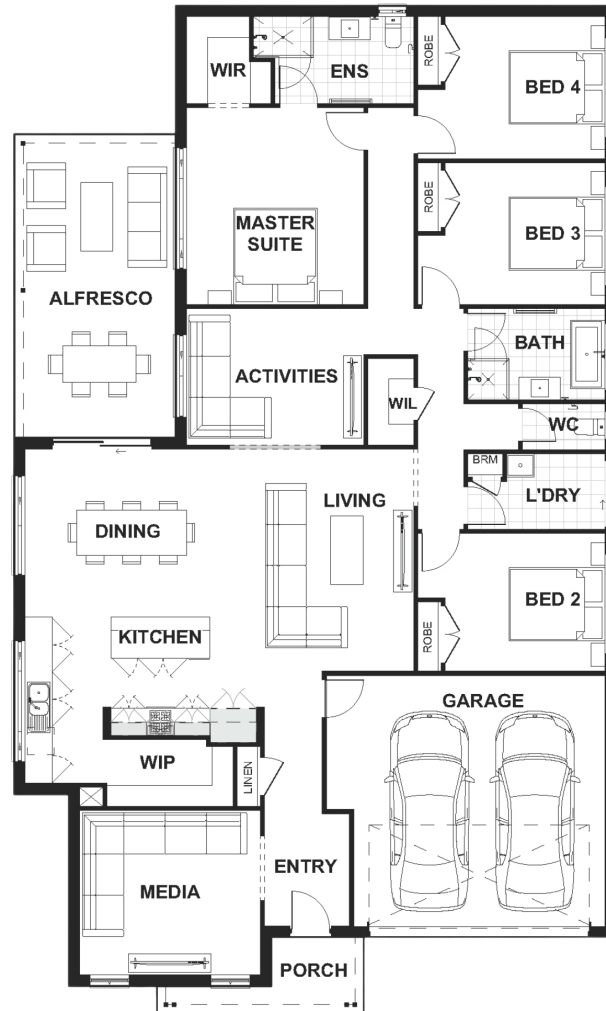
PEARSON FACADE



Total (sq.s.)	28.39	Width (m)	13.15
Total (m²)	263.71	Length (m)	22.03

Description

The Seaview 264 Rear master is a home of insightful creativity that features distinct living zones. This is a home designed to fit the many needs of a modern family. A spacious four Bedroom, two Bathroom home that keeps on giving. Soak up the natural light from the large alfresco which is connected to the open plan dining, rumpus, and master. The open plan dining/living connects with the stunning kitchen including an island bench perfect for the family and an oversized walk-in pantry. Retreat for quiet time in the separate media room where you can just chill, relax or enjoy cozy movie nights in. With the master and three remaining bedrooms situated at the rear of the home we have created the perfect sleep zone, an area dedicated to sleep and rest separated from the rest of the home. The master opens to the peaceful haven of your alfresco and includes a generous walk-in robe, and private ensuite. The children's rooms are all grand in size and include built in robes. Work, rest, play, the Seaview 264 Rear master has you



Terms and Conditions: Images shown on this brochure are approximate and for illustration purposes only, these plans may not be drawn to scale. Façades and other images on this brochure may be shown as optional upgrades or not included, additional fixtures and finishes that are featured on this document may not be included in the base cost such as landscaping, tiling, decking, furniture, feature lighting, pools, driveways etc. Hunter Homes reserves the right to change plans and inclusions at any time. All designs that are developed remain the property of Hunter Homes Pty Ltd under copyright law & we retain & claim all rights to these plans. Changing plans by 50% or more does not avoid legal responsibility for a copyright breach.

1300 BUY HOME

See our website for Display locations
www.hunterhomesnsw.com

love YOUR HUNTER HOME

Seaview 264