

HUNTER HOMES

live WITH HEART 



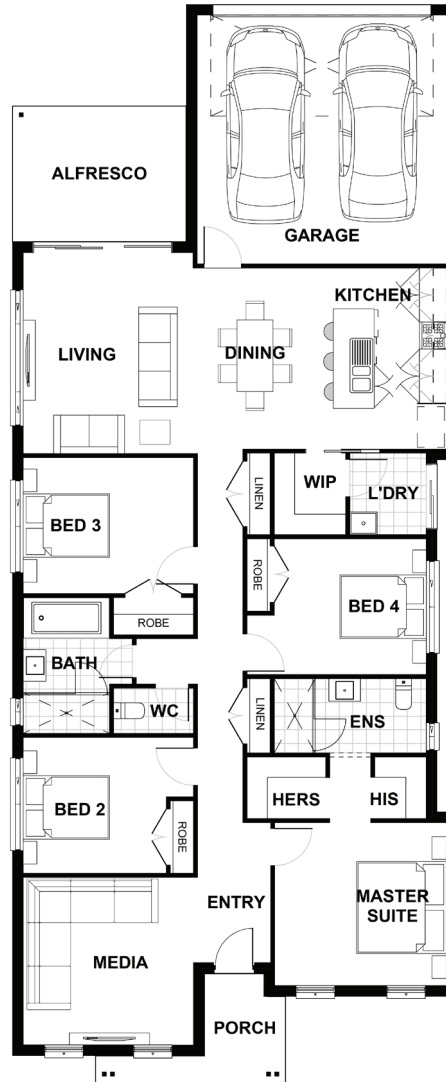
BOWMAN FACADE



Total (sqm.)	22.96	Width (m)	9.81
Total (m ²)	213.26	Length (m)	23.82

Description

The Dalley 213 is a light-filled family sanctuary with rear lane access. The central kitchen, living and dining area allows for easy entry to the breezy rear alfresco. The centrally located living area is perfectly positioned for Saturday night celebrations with friends or Sunday brunches with family. This smartly designed home has a front positioned media and master suite which boasts his and her robes and stylishly designed ensuite. The additional three bedrooms all with robes are centrally located and positioned around the family bathroom making this the ideal layout. This home is a perfect and practical four bedroom home with no fuss.



Terms and Conditions: Images shown on this brochure are approximate and for illustration purposes only, these plans may not be drawn to scale. Façades and other images on this brochure may be shown as optional upgrades or not included, additional fixtures and finishes that are featured on this document may not be included in the base cost such as landscaping, tiling, decking, furniture, feature lighting, pools, driveways etc. Hunter Homes reserves the right to change plans and inclusions at any time. All designs that are developed remain the property of Hunter Homes Pty Ltd under copyright law & we retain & claim all rights to these plans. Changing plans by 50% or more does not avoid legal responsibility for a copyright breach.

1300 BUY HOME

See our website for Display locations
www.hunterhomesnsw.com

love YOUR HUNTER HOME

Dalley 213