

# THE SIENNA

*Pearson Facade*

HUNTER  
HOMES



219

# THE SIENNA

Pearson Facade

## Description

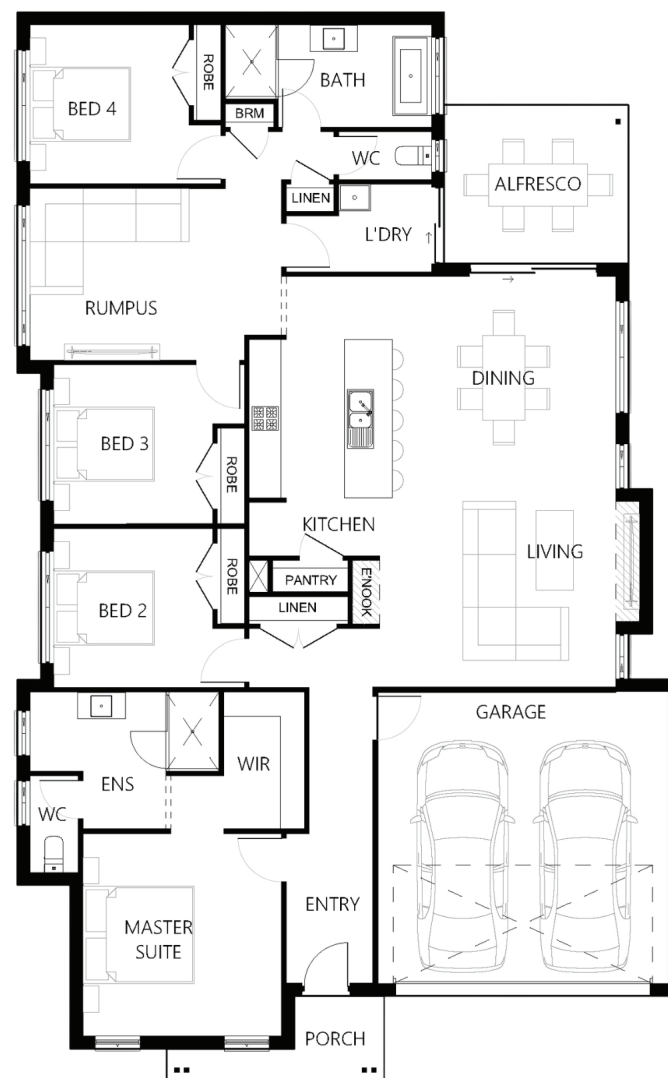
The Sienna 219 has dual living zones for the family to enjoy! With a master suite located at the front of the home, including a spacious walk in robe and generous sized ensuite, this makes a perfect parent retreat. The heart of the home features the open plan living / dining area, overlooked by a stylish kitchen with an island bench and oversized pantry. The three bedrooms are well located within the home, easily accessing all areas.

Bedrooms	4
Bathrooms	2
Car Garage	2

Total m²	219.12
Total sqs	23.59
Width (m)	12.54
Length (m)	20.17

# 219

[hunterhomesnsw.com](http://hunterhomesnsw.com)



Floor plan not drawn to scale

