

HUNTER HOMES

live WITH HEART 



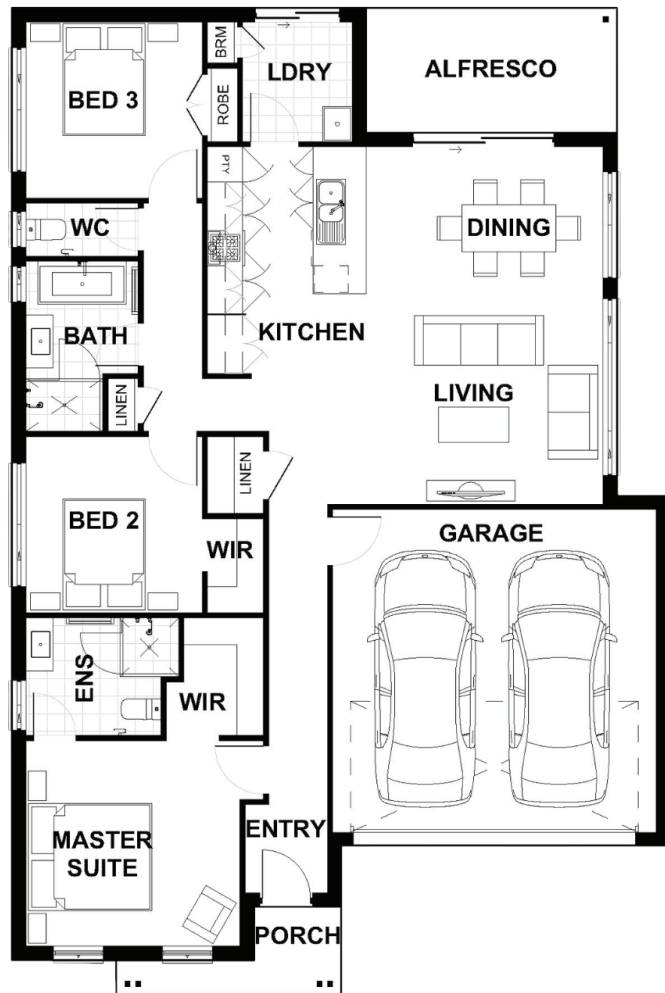
BOWMAN FACADE



Total (sq.s.)	17.85	Width (m)	11.2
Total (m ²)	165.8	Length (m)	16.83

Description

The Vintage 165 is for the entertainers at heart with a budget in mind. With the living spaces and kitchen area located at the rear of the home and flowing through to the alfresco, this home is an entertainer's delight. Designed to maximise space, with a large master suite and ensuite bathroom positioned in the front of the home, with the two remaining bedrooms and family bathroom to one side. This leaves the other side free for entertaining with the galley style kitchen opening to the living and dining rooms, which in turn flow to the large alfresco to enjoy that indoor, outdoor feeling.



Terms and Conditions: Images shown on this brochure are approximate and for illustration purposes only, these plans may not be drawn to scale. Façades and other images on this brochure may be shown as optional upgrades or not included, additional fixtures and finishes that are featured on this document may not be included in the base cost such as landscaping, tiling, decking, furniture, feature lighting, pools, driveways etc. Hunter Homes reserves the right to change plans and inclusions at any time. All designs that are developed remain the property of Hunter Homes Pty Ltd under copyright law & we retain & claim all rights to these plans. Changing plans by 50% or more does not avoid legal responsibility for a copyright breach.

1300 BUY HOME

See our website for Display locations
www.hunterhomesnsw.com

love YOUR HUNTER HOME

Vintage 165