

# HUNTER HOMES

live WITH HEART 



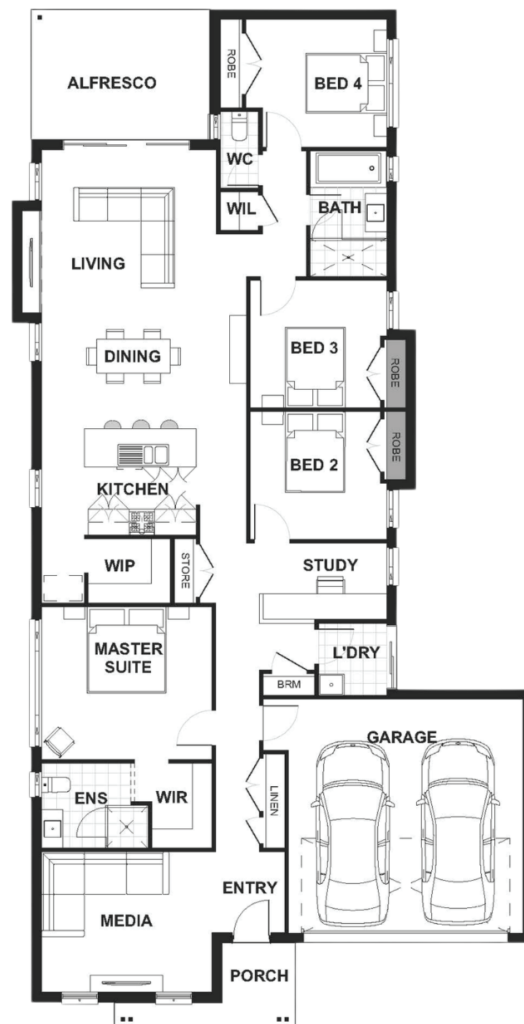
## PEARSON FACADE



Total (sq.s.)	23.9	Width (m)	12.24
Total (m <sup>2</sup> )	222.04	Length (m)	23.97

### Description

With an easy and fluid transition between interior and exterior spaces, the Heyfield 222's open-plan design and stunning alfresco is perfect for contemporary living. Suited for narrow sites, this beautiful home maximises storage space with a walk-in pantry, built in robes and a versatile study space. As your family grows, so will your needs which makes this the ideal family home in terms of design and layout. Options like adapting the comfortable home theatre and spacious double garage into additional living and accommodation areas are always there for you as the years go by. Featuring four bedrooms, including an impressive mid master suite with ensuite, the Heyfield 222 ticks all the boxes for the budget-conscious homeowner.



**Terms and Conditions:** Images shown on this brochure are approximate and for illustration purposes only, these plans may not be drawn to scale. Façades and other images on this brochure may be shown as optional upgrades or not included, additional fixtures and finishes that are featured on this document may not be included in the base cost such as landscaping, tiling, decking, furniture, feature lighting, pools, driveways etc. Hunter Homes reserves the right to change plans and inclusions at any time. All designs that are developed remain the property of Hunter Homes Pty Ltd under copyright law & we retain & claim all rights to these plans. Changing plans by 50% or more does not avoid legal responsibility for a copyright breach.

1300 BUY HOME

See our website for Display locations  
[www.hunterhomesnsw.com](http://www.hunterhomesnsw.com)

love YOUR HUNTER HOME

Heyfield 222