

THE VINTAGE

Bowman Facade

HUNTER
HOMES



165

THE VINTAGE

Bowman Facade

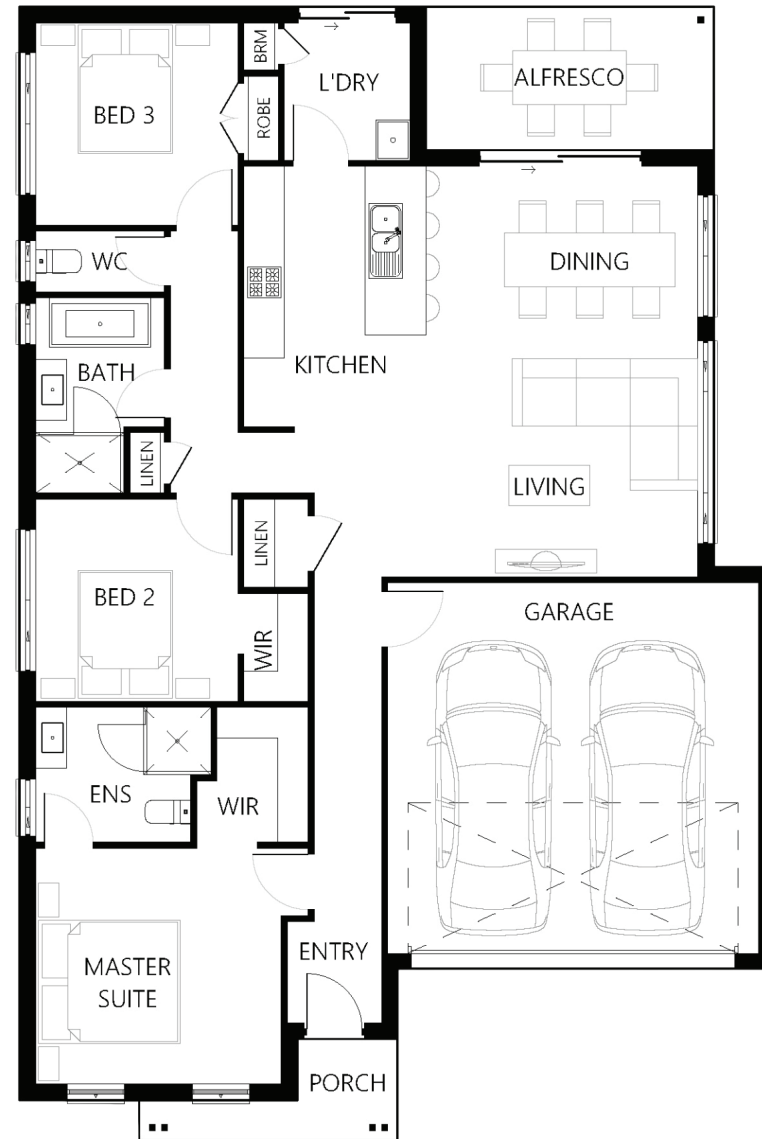
Description

The Vintage 165 is for the entertainers at heart with a budget in mind. With the living spaces and kitchen area located at the rear of the home and flowing through to the alfresco, this home is an entertainer's delight. Designed to maximise space, with a large master suite and ensuite bathroom positioned in the front of the home, with the two remaining bedrooms and family bathroom to one side. This leaves the other side free for entertaining with the galley style kitchen opening to the living and dining rooms, which in turn flow to the large alfresco to enjoy that indoor, outdoor feeling.

Bedrooms	3
Bathrooms	2
Car Garage	2
<hr/>	
Total m ²	165.8
Total sqs	17.85
Width (m)	11.2
Length (m)	16.83

165

hunterhomesnsw.com



Floor plan not drawn to scale

