

HUNTER HOMES

live WITH HEART 



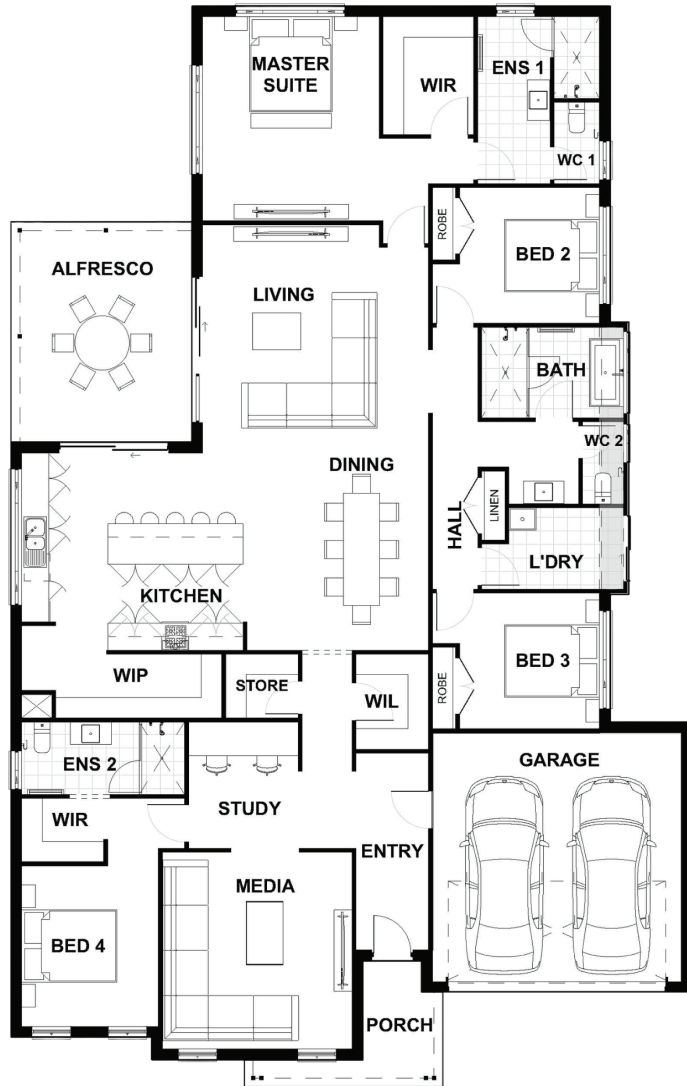
CLIFTON FACADE



Total (sqsq.)	34.24	Width (m)	15.06
Total (m²)	318.11	Length (m)	23.91

Description

The Albion 304 is a spacious four bedroom, multi-functional family home with a combination of dedicated areas and open shared spaces. Parents will love the resort-style master suite at the rear of the home, with its views over the back garden, to include large walk in robe & ensuite. With a guest bedroom, ensuite and home theatre coming together at the front. This private area is destined to become a sought-after home away from home for visitors. The remaining bedrooms have easy access to the large family bathroom. The heart of the home is central, where the gourmet kitchen, living and dining blend to create a large, light-filled area flowing effortlessly to the alfresco.



Terms and Conditions: Images shown on this brochure are approximate and for illustration purposes only, these plans may not be drawn to scale. Façades and other images on this brochure may be shown as optional upgrades or not included, additional fixtures and finishes that are featured on this document may not be included in the base cost such as landscaping, tiling, decking, furniture, feature lighting, pools, driveways etc. Hunter Homes reserves the right to change plans and inclusions at any time. All designs that are developed remain the property of Hunter Homes Pty Ltd under copyright law & we retain & claim all rights to these plans. Changing plans by 50% or more does not avoid legal responsibility for a copyright breach.

Albion 304

1300 BUY HOME

See our website for Display locations
www.hunterhomesnsw.com

love YOUR HUNTER HOME