

# HUNTER HOMES

live WITH HEART 



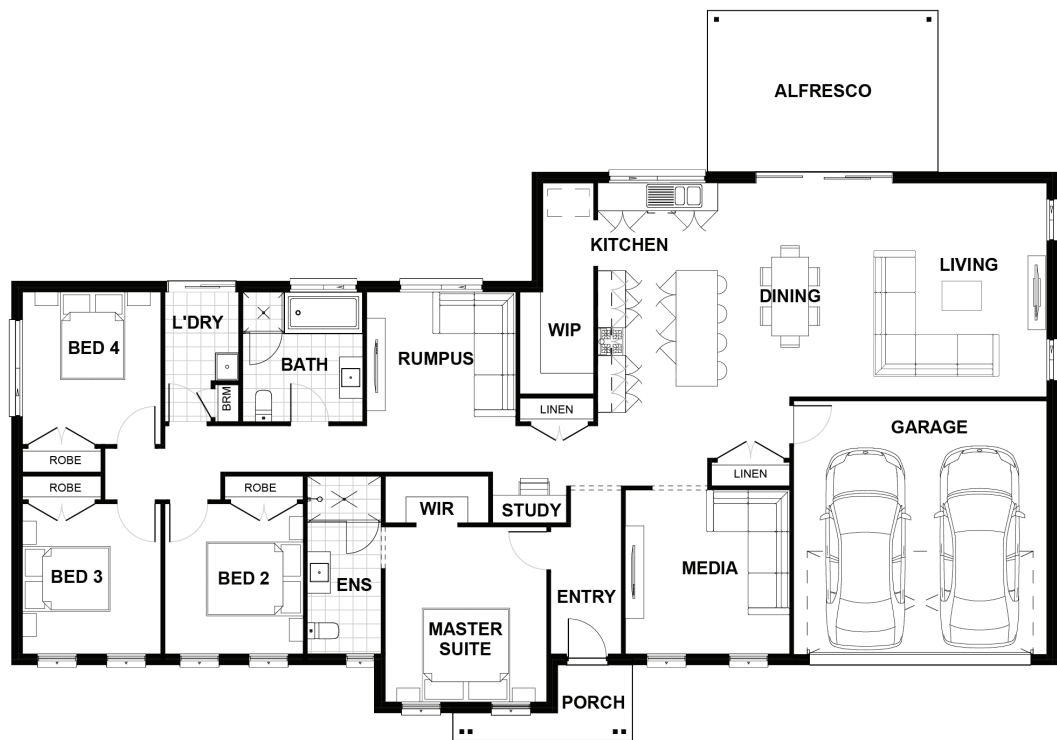
## BOWMAN ALT FACADE



Total (sq.s.)	25.99	Width (m)	22.7
Total (m <sup>2</sup> )	241.47	Length (m)	15.83

### Description

The Mooring 259 Corner combines all the essential elements of modern living to deliver a retreat in the comfort of your own home. The unique design unlocks endless possibility for your family's everyday lives. Living spaces are ideally located, creating a true sense of rest and relaxation when it's time to find sanctuary in private spaces. The generous master suit comes complete with a decadent ensuite and spacious walk-in robe, this lavish retreat is a well-earned reward for parents at the end of the day. Kids will be equally ecstatic with their space. Three bedrooms and a large family bathroom provide a dedicated area for chilling and enjoying quiet time. Just off the front entrance is the entry to the large media, living and dining space. The stunning gourmet kitchen with a generous island bench and additional bench top area takes pride of place providing the ideal setting for everyday living.



**Terms and Conditions:** Images shown on this brochure are approximate and for illustration purposes only, these plans may not be drawn to scale. Façades and other images on this brochure may be shown as optional upgrades or not included, additional fixtures and finishes that are featured on this document may not be included in the base cost such as landscaping, tiling, decking, furniture, feature lighting, pools, driveways etc. Hunter Homes reserves the right to change plans and inclusions at any time. All designs that are developed remain the property of Hunter Homes Pty Ltd under copyright law & we retain & claim all rights to these plans. Changing plans by 50% or more does not avoid legal responsibility for a copyright breach.

1300 BUY HOME

See our website for Display locations  
[www.hunterhomesnsw.com](http://www.hunterhomesnsw.com)

love YOUR HUNTER HOME

Mooring 259 Corner