

HUNTER HOMES

live WITH HEART 



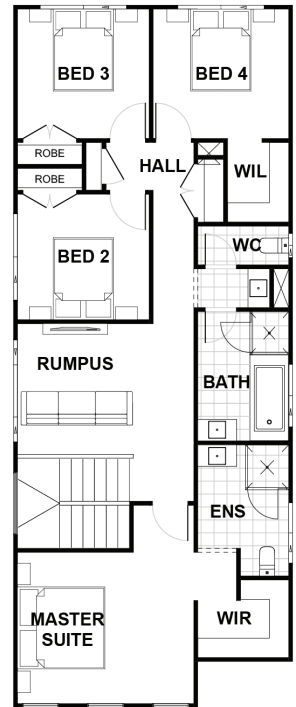
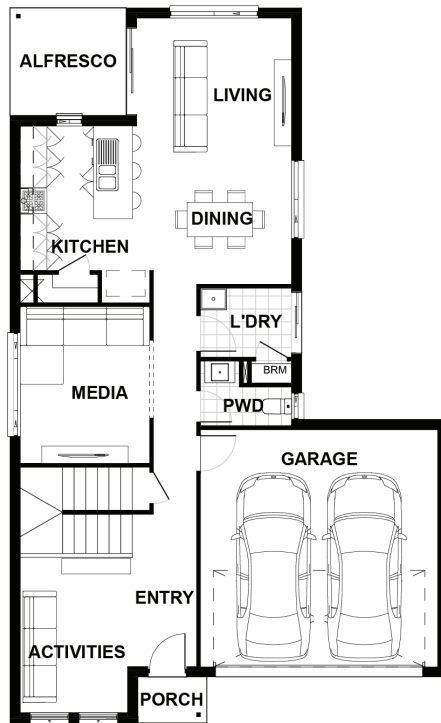
CLASSIC FACADE



Total (sq.s.)	25.09	Width (m)	10.16
Total (m ²)	233.11	Length (m)	16.58

Description

The Hampden 233 is everything that you want in a double story home. On the ground level upon entry you will find a spacious activities and media room with the open plan living/dining located towards the rear of the home. The galley style kitchen overlooks the dining and living area which connects to an alfresco area making this level the ideal space for family and or entertaining guest. The top floor includes four bedrooms with a grand master suite located at the front of the home with a large ensuite and walk in wardrobe. On this level at the top of the stair is a rumpus room making this area another space to relax as a family.



Terms and Conditions: Images shown on this brochure are approximate and for illustration purposes only, these plans may not be drawn to scale. Façades and other images on this brochure may be shown as optional upgrades or not included, additional fixtures and finishes that are featured on this document may not be included in the base cost such as landscaping, tiling, decking, furniture, feature lighting, pools, driveways etc. Hunter Homes reserves the right to change plans and inclusions at any time. All designs that are developed remain the property of Hunter Homes Pty Ltd under copyright law & we retain & claim all rights to these plans. Changing plans by 50% or more does not avoid legal responsibility for a copyright breach.

1300 BUY HOME

See our website for Display locations
www.hunterhomesnsw.com

love YOUR HUNTER HOME

Hampden 233