

# THE MOORING

*Maryvale Facade*

HUNTER  
HOMES



232

# THE MOORING

Maryvale Facade

## Description

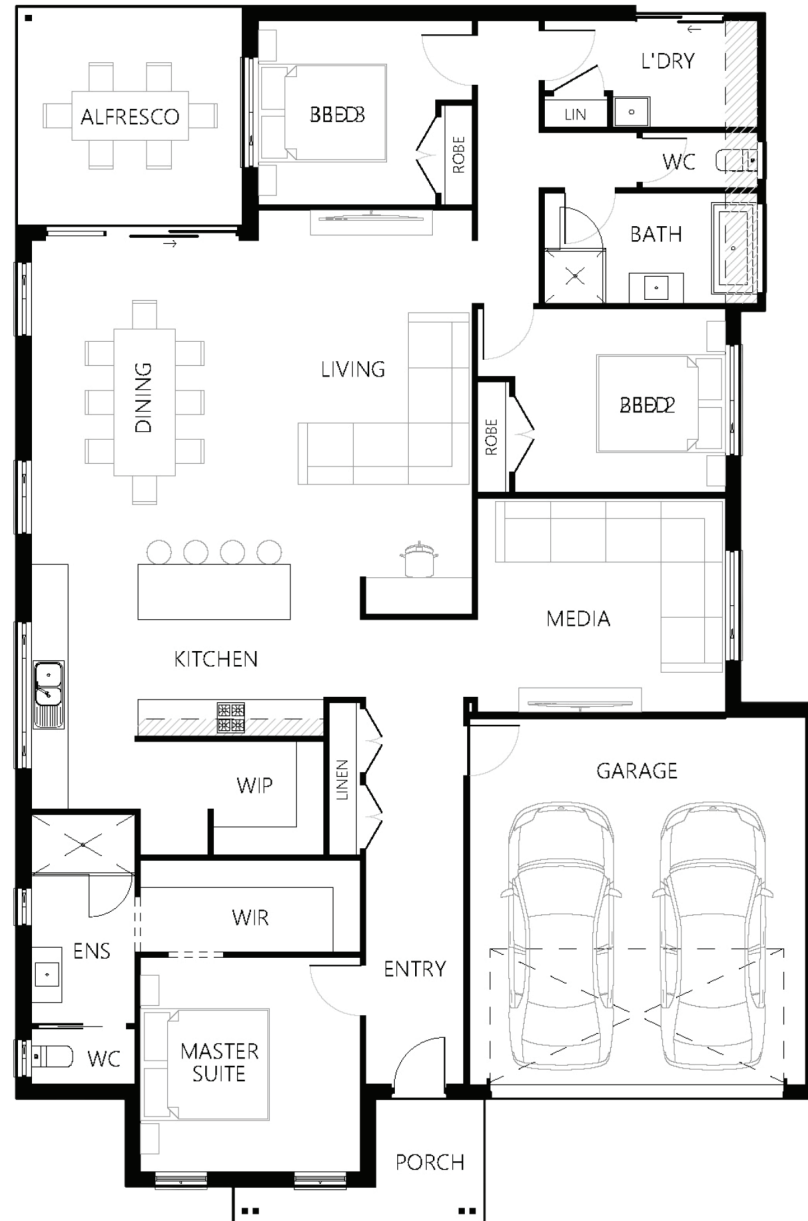
The Mooring 232 combines all the essential elements of modern living to deliver a retreat in the comfort of your own home. The unique design unlocks endless possibility for your family's everyday lives with living spaces located in the center of the home, creating a true sense of rest and relaxation when it's time to find sanctuary in private spaces. The living and dining spaces along with the media room are all centrally located. The stunning gourmet kitchen, that features a generous island bench, is the ideal setting for everyday living. The grand master suite located at the front of the home creates the ultimate retreat-like vibe being separated from the rest of the home. Complete with a decadent ensuite and spacious walk-in robe, this lavish retreat is a well-earned reward at the end of the day.

<b>Bedrooms</b>	3
<b>Bathrooms</b>	2
<b>Car Garage</b>	2

<b>Total m<sup>2</sup></b>	232.54
<b>Total sqs</b>	25.03
<b>Width (m)</b>	13.13
<b>Length (m)</b>	19.89

# 232

[hunterhomesnsw.com](http://hunterhomesnsw.com)



Floor plan not drawn to scale

