

HUNTER HOMES

live WITH HEART 



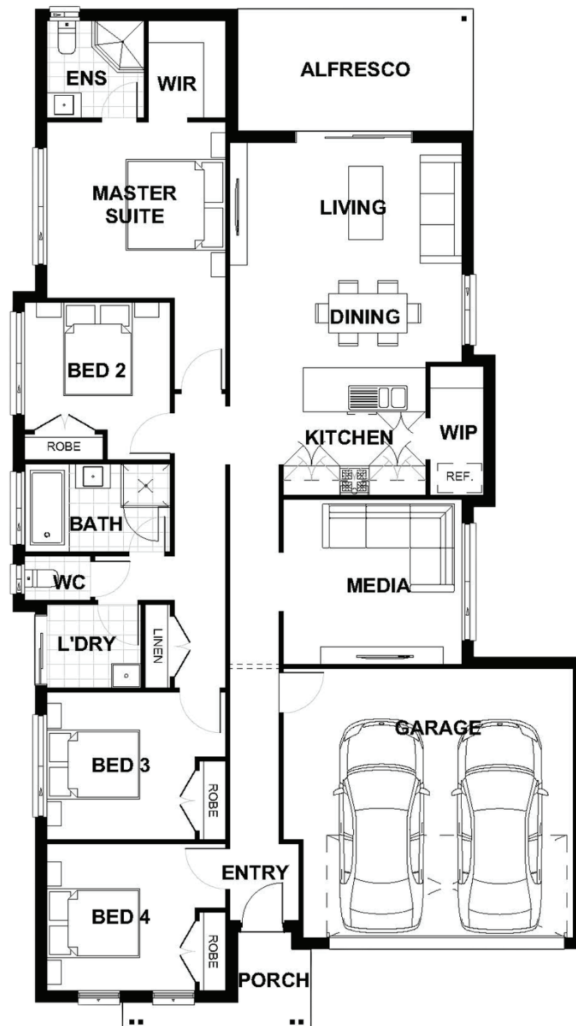
GLENBAWN FACADE



Total (sqm.)	21.34	Width (m)	11.67
Total (m ²)	198.27	Length (m)	20.89

Description

The Finlay 198 has an open-plan living area that is at the heart of this functional family home. The alfresco, family and dining areas are conveniently positioned to ensure you will be entertaining all year round. Prepare meals in the stylish central kitchen and entertain family and guests, watch a movie or escape to the covered alfresco to relax and unwind. Four spacious bedrooms are well separated to provide peace and privacy throughout, featuring a rear master suite. Allow yourself to imagine the lifestyle you have always wanted; in the home you deserve!



Terms and Conditions: Images shown on this brochure are approximate and for illustration purposes only, these plans may not be drawn to scale. Façades and other images on this brochure may be shown as optional upgrades or not included, additional fixtures and finishes that are featured on this document may not be included in the base cost such as landscaping, tiling, decking, furniture, feature lighting, pools, driveways etc. Hunter Homes reserves the right to change plans and inclusions at any time. All designs that are developed remain the property of Hunter Homes Pty Ltd under copyright law & we retain & claim all rights to these plans. Changing plans by 50% or more does not avoid legal responsibility for a copyright breach.

1300 BUY HOME

See our website for Display locations
www.hunterhomesnsw.com

love YOUR HUNTER HOME

Finlay 198