

THE CYPRESS

Yves Facade

HUNTER
HOMES



298

THE CYPRESS

Yves Facade

Description

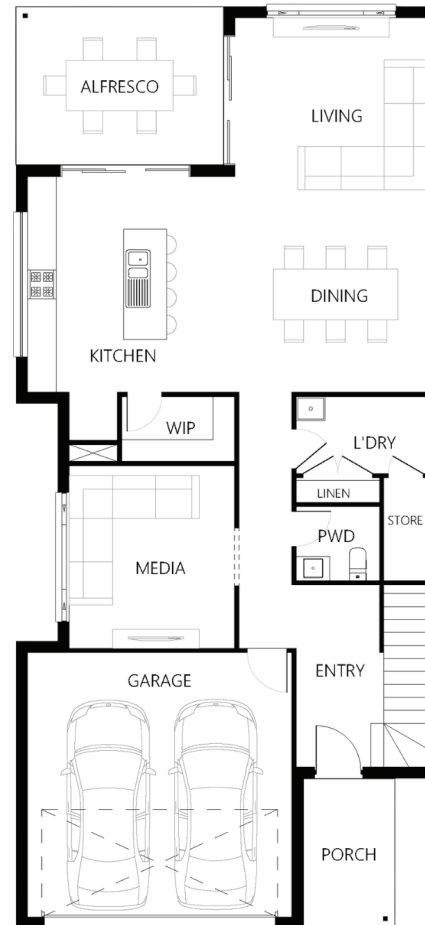
Compact living at its finest, the Cypress 298 is a two-storey design built with family in mind. Upon entering the home, you will be automatically drawn to the void at the entry. The first level includes a master suite located at the front of the home complete with a his and hers spacious wardrobe and ensuite with a double basin. Off the top of the stairs there is a home office and three bedrooms which surround a family bathroom. A rumpus room completes this top level with access to the main deck. Downstairs there is a private media room, galley style kitchen with an island bench and combined living/dining. The living and kitchen area connect the to the alfresco making it a perfect space for entertaining.

Bedrooms	4
Bathrooms	2
Car Garage	2

Total m ²	298.37
Total sqs	32.12
Width (m)	8.8
Length (m)	19.18

298

hunterhomesnsw.com



Floor plan not drawn to scale

