

# THE LINTON

*Quay Facade*

HUNTER  
HOMES



232

# THE LINTON

Quay Facade

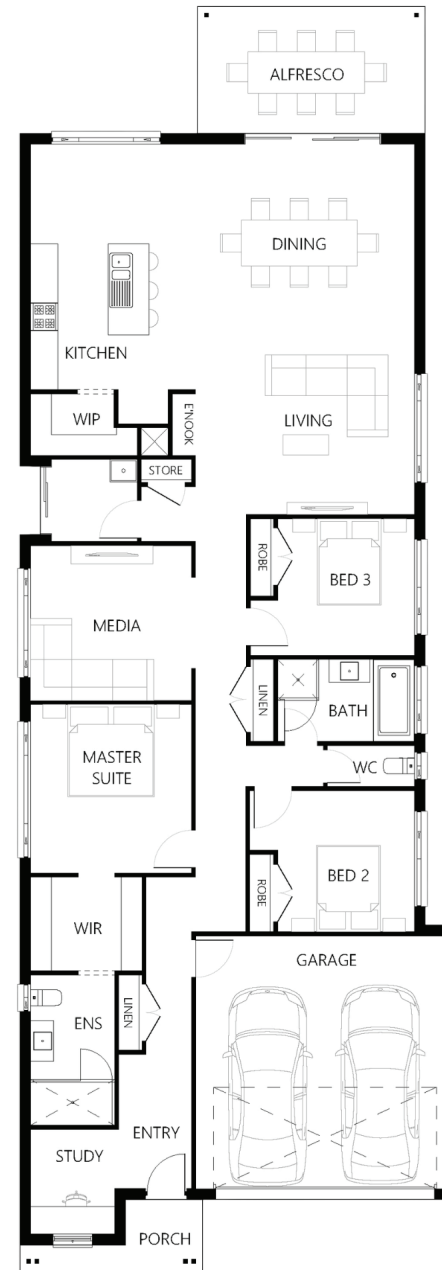
## Description

Expertly designed for narrow lots - The Linton 232 design is a lot of house for a great price. Everything you need is featured in this home, with a home office to the front, three bedrooms to the center of the home, a separate media room which can be converted to a kids activity room and a large open plan living, dining and entertaining area featured at the back which connects to the alfresco area. This home has a stylish kitchen with an island bench and walk-in pantry overlooking the open plan entertaining space. The master suit designed centrally has a walk through robe into an ensuite. The home is ideal for young families wanting to keep the children close, investors or those looking to downsize with plenty of room for friends and family to visit.

|                            |        |
|----------------------------|--------|
| <b>Bedrooms</b>            | 3      |
| <b>Bathrooms</b>           | 2      |
| <b>Car Garage</b>          | 2      |
| <hr/>                      |        |
| <b>Total m<sup>2</sup></b> | 232.26 |
| <b>Total sqs</b>           | 25.0   |
| <b>Width (m)</b>           | 9.6    |
| <b>Length (m)</b>          | 27.8   |

# 232

[hunterhomesnsw.com](http://hunterhomesnsw.com)



Floor plan not drawn to scale

