

THE HAMPDEN

Classic Facade

HUNTER
HOMES



233

THE HAMPDEN

Classic Facade

Description

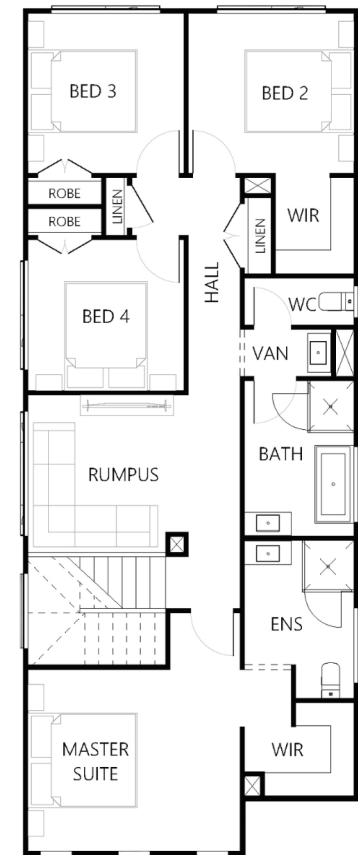
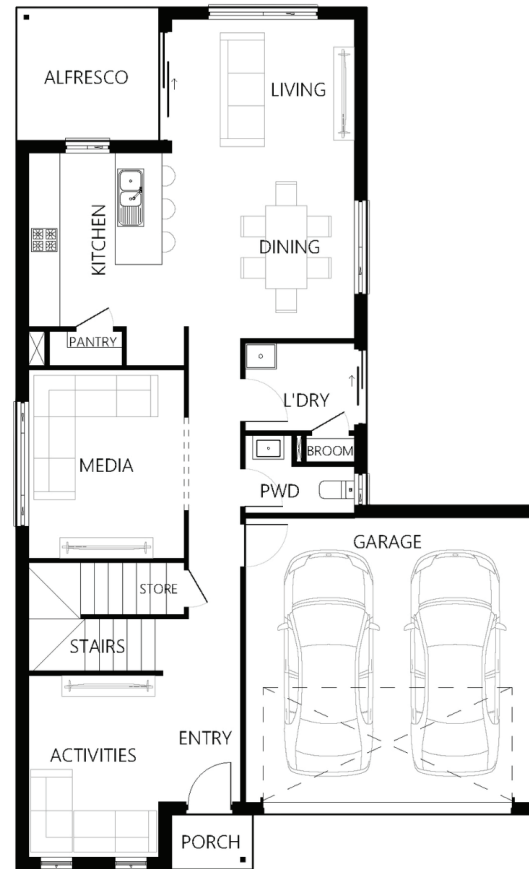
The Hampden 233 is everything that you want in a double story home. On the ground level upon entry you will find a spacious activities and media room with the open plan living/dining located towards the rear of the home. The galley style kitchen overlooks the dining and living area which connects to an alfresco area making this level the ideal space for family and or entertaining guest. The top floor includes four bedrooms with a grand master suite located at the front of the home with a large ensuite and walk in wardrobe. On this level at the top of the stair is a rumpus room making this area another space to relax as a family.

Bedrooms	4
Bathrooms	2
Car Garage	2

Total m²	233.11
Total sqs	25.09
Width (m)	10.16
Length (m)	16.58

233

hunterhomesnsw.com



Floor plan not drawn to scale

