

THE VALENTINO

Pelle Facade

HUNTER
HOMES



379

THE VALENTINO

Pelle Facade

Description

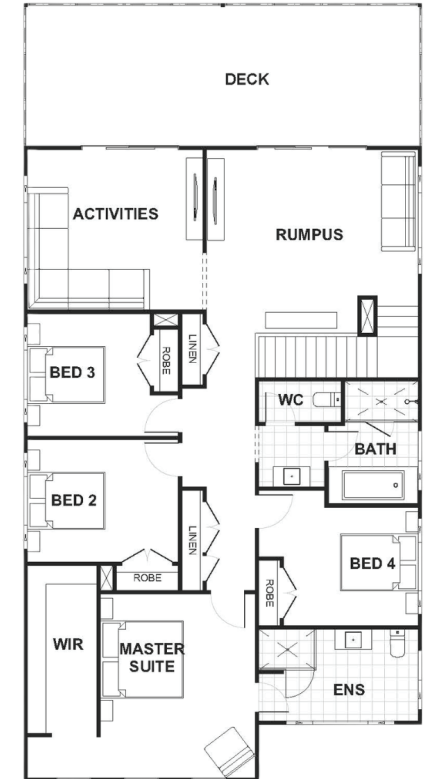
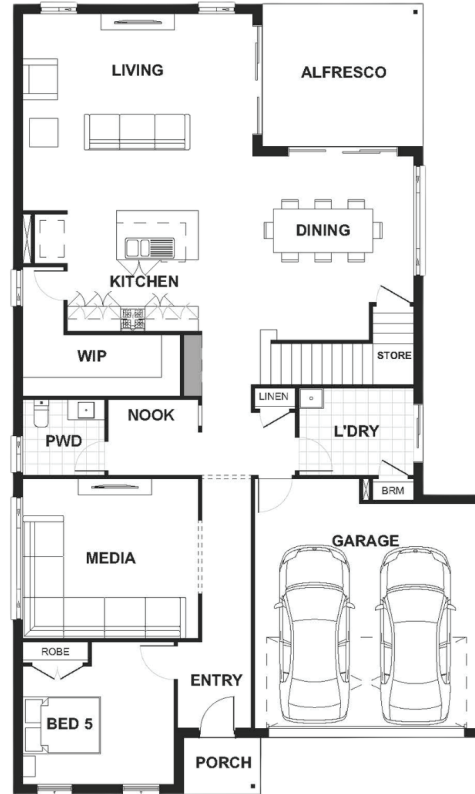
The Valentino 379 is a five bedroom masterpiece design with a stunning void at the back of the home. The top level of this home holds a grand master suite which opens to a private balcony and a spacious ensuite. Three bedrooms are also located on this level which surround the family bathroom. At the top of the stairs you will be led into a rumpus and activity room which is ideal for a growing family and also opens to a private balcony at the rear of the home. The ground level has a private bedroom located off the entry which can be used as a guest wing with a living area and open plan living/dining at the rear. The kitchen has an oversized island bench and walk-in pantry with the living and dining room both connecting to the alfresco area. The void is above the living area and creates a magnificent space for light whilst creating amazing ambiance.

Bedrooms	5
Bathrooms	2
Car Garage	2

Total m²	379.65
Total sqs	40.87
Width (m)	11.66
Length (m)	19.38

379

hunterhomesnsw.com



Floor plan not drawn to scale

