

HUNTER HOMES

live WITH HEART 



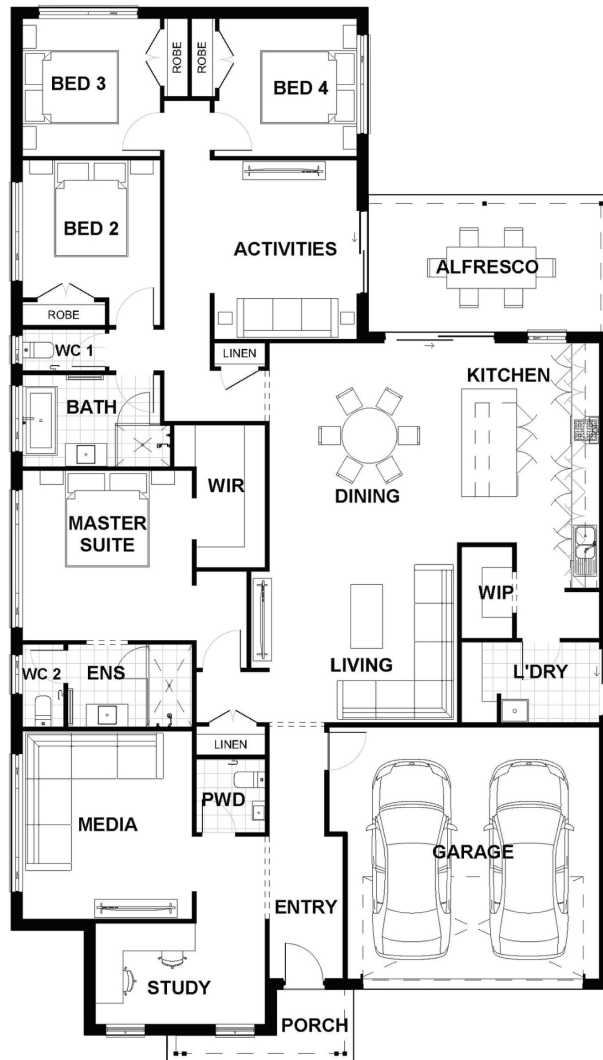
BOWMAN FACADE



Total (sqsq.)	28.43	Width (m)	13.05
Total (m ²)	264.12	Length (m)	23.01

Description

The Bellevue 260 is ideal for growing families wanting their own space with multiple living areas. The home comes with a media room and study, along with an activities room and a huge open plan dining and living area located off the stylish galley style kitchen. The master suite is situated to the side of the home opposite the living area and comes with a spacious walk in robe and ensuite. The remaining three bedrooms are located at the rear and are connected to the activities room. With plenty of space including an alfresco which joins both the living area and activity room, this is the home that you can live comfortably in all year round.



Terms and Conditions: Images shown on this brochure are approximate and for illustration purposes only, these plans may not be drawn to scale. Façades and other images on this brochure may be shown as optional upgrades or not included, additional fixtures and finishes that are featured on this document may not be included in the base cost such as landscaping, tiling, decking, furniture, feature lighting, pools, driveways etc. Hunter Homes reserves the right to change plans and inclusions at any time. All designs that are developed remain the property of Hunter Homes Pty Ltd under copyright law & we retain & claim all rights to these plans. Changing plans by 50% or more does not avoid legal responsibility for a copyright breach.

1300 BUY HOME

See our website for Display locations
www.hunterhomesnsw.com

love YOUR HUNTER HOME

Bellevue 260