

# THE WALDEN

*Fullerton Facade (253)*

HUNTER  
HOMES



254

# THE WALDEN

Fullerton Facade (253)

## Description

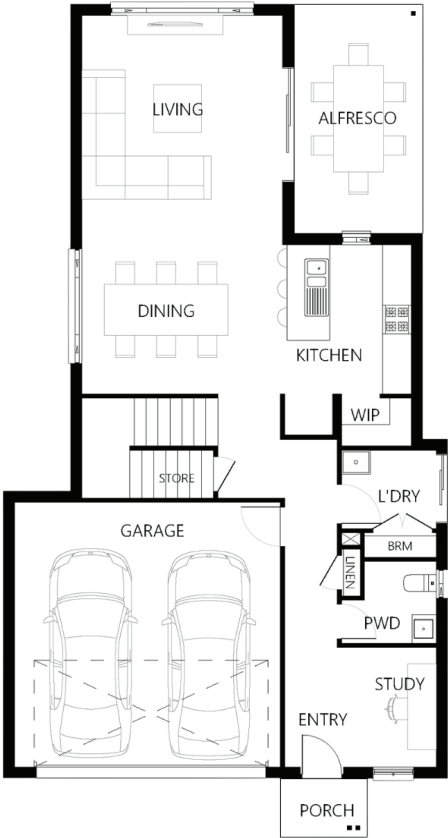
The Walden 254 is ideal for a small block whilst adding multiple living areas for a growing family. The ground level includes a kitchen with open plan dining and living areas which opens to an alfresco. The top floor master suite is located at the rear of the home complete with a spacious walk in wardrobe and ensuite. Three additional bedrooms are located on this level with one connected off the master whilst the other two are located at the front of the home. The family bathroom is adjacent to the study which is a perfect space for a home office. This level is also home to the rumpus which can be turned into a great entertainment hub for the entire family.

Bedrooms	4
Bathrooms	2
Car Garage	2

Total m²	253
Total sqs	27.23
Width (m)	9.3
Length (m)	17.43

254

[hunterhomesnsw.com](http://hunterhomesnsw.com)



Floor plan not drawn to scale

