

# THE ALPINE

*Hillsborough Facade*

HUNTER  
HOMES



208

# THE ALPINE

Hillsborough Facade

## Description

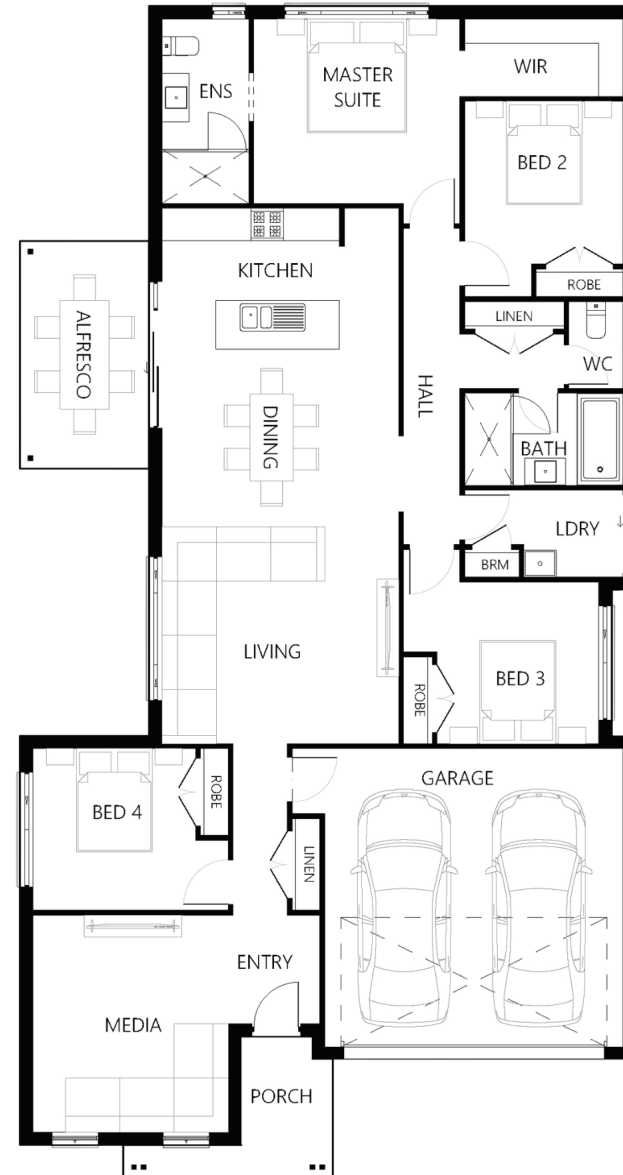
Full of natural light and sunny spaces, the Alpine 208 is a home that draws everyone together. Large open plan living and dining space joins seamlessly to the spacious alfresco. Perfect for entertaining friends, it is also a welcoming area for the family to hang out together and catch up after a busy day. The comfortable home theatre creates an additional living space away from the hub of the home which has been cleverly located at the front of the house. The Alpine 208 has four bedrooms, including a master suite at the rear with an ensuite and walk in robe. Combining easy family living with plenty of practicality, the Alpine is a generously proportioned home that makes every day a special one!

Bedrooms	4
Bathrooms	2
Car Garage	2

Total m <sup>2</sup>	208.93
Total sqs	22.49
Width (m)	11.36
Length (m)	21.6

# 208

[hunterhomesnsw.com](http://hunterhomesnsw.com)



Floor plan not drawn to scale

