

THE MAIDFORD

Bowman Alt Facade

HUNTER
HOMES



169

THE MAIDFORD

Bowman Alt Facade

Description

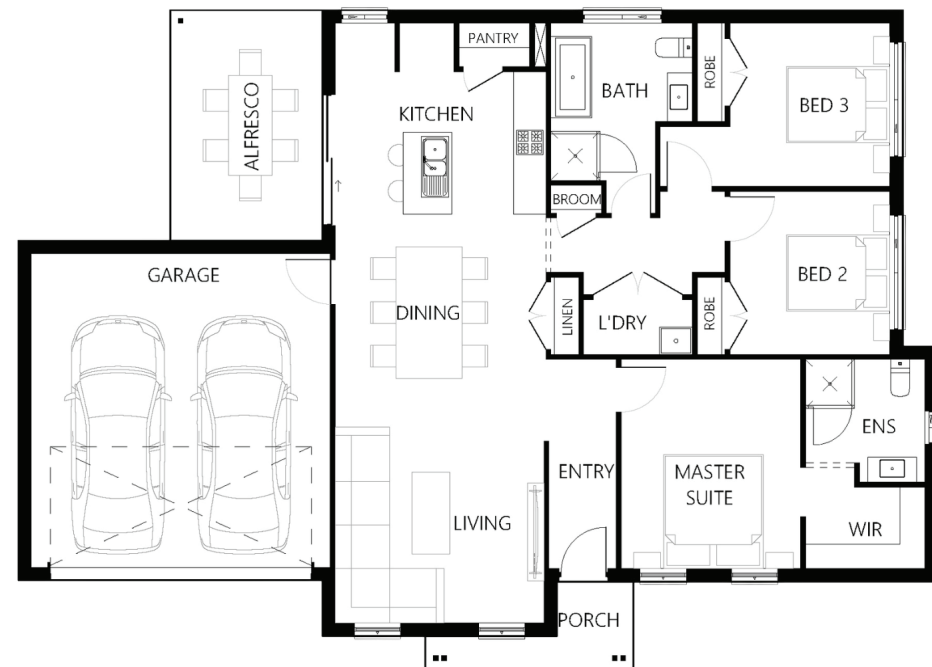
The Maidford 169 has been designed for integrated living whilst utilising the alfresco. The master suite is situated at the front of the home with a generous ensuite and walk in robe. The two remaining bedrooms are located at rear of the home with their own private bathroom off the connecting hallway with access to the laundry. The open planned design has a large living area and a galley style kitchen with an island bench that overlooks the dining area. Connecting the indoor with outdoors, the alfresco is located off the kitchen which is ideal for entertaining guests. This home design opens to dual living and corner block configurations.

Bedrooms	3
Bathrooms	2
Car Garage	2

Total m²	169.84
Total sqs	18.28
Width (m)	16.9
Length (m)	12.11

169

hunterhomesnsw.com



Floor plan not drawn to scale

