

# THE TALLOWOOD

*Classic Facade*

HUNTER  
HOMES



251

# THE TALLOWOOD

*Classic Facade*

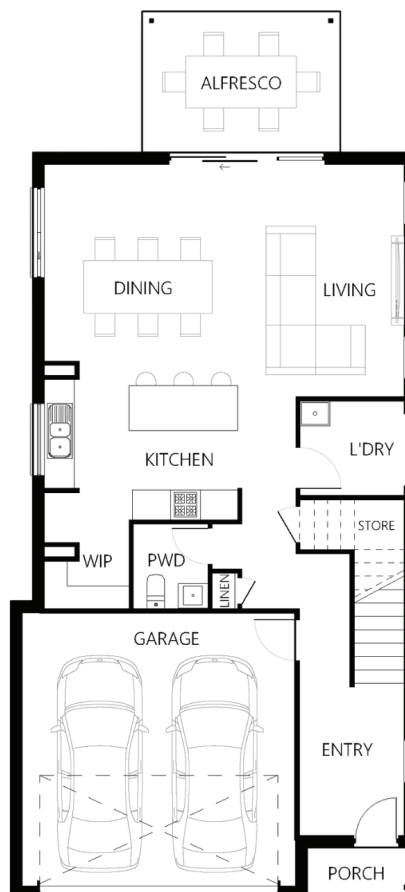
## Description

The Tallowood 251 is a smartly designed two storey home that is certainly more than meets the eye! On the lower level of the home you will find an open plan living/dining area adjacent to the kitchen with multiple bench top areas, an island bench and walk in pantry. The dining and living area connect to the alfresco allowing the best of indoor and outdoor living. On the second floor you will find all four bedrooms with the master suite located towards the rear complete with a walk-in wardrobe and spacious ensuite. The top level includes another three bedrooms, with an oversized bedroom at the front of the home which is perfect for a guest room or teenagers retreat. Completing this top level is a generous rumpus room and a study area.

<b>Bedrooms</b>	4
<b>Bathrooms</b>	2
<b>Car Garage</b>	2
<hr/>	
<b>Total m²</b>	250.91
<b>Total sqs</b>	27.01
<b>Width (m)</b>	8.17
<b>Length (m)</b>	17.86

# 251

[hunterhomesnsw.com](http://hunterhomesnsw.com)



Floor plan not drawn to scale

