

THE CYPRESS

Yves Facade

HUNTER
HOMES



327

THE CYPRESS

Yves Facade

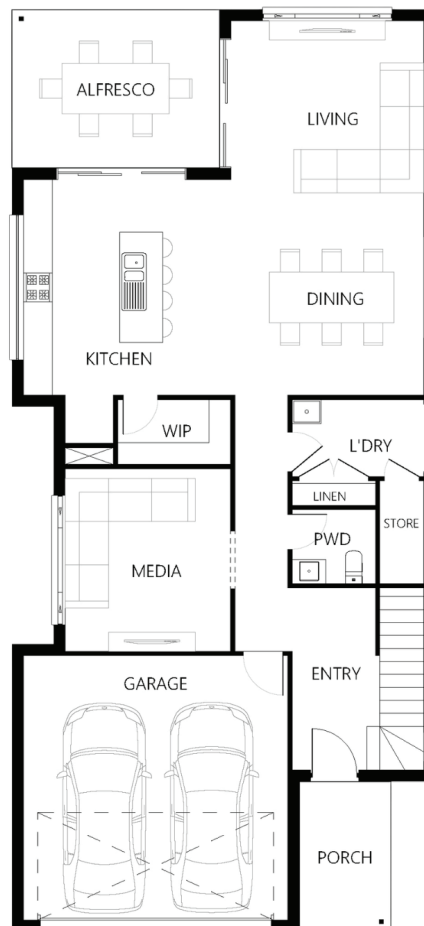
Description

The Cypress 327 has been designed to live a grandiose lifestyle with all the mod cons. Upon entering the home, you will be automatically drawn to the void at the entry. The first level includes a master suite located at the front of the home complete with a his and hers spacious wardrobe and ensuite with a double basin. Off the top of the stairs there is a study and three bedrooms which surround a family bathroom. A rumpus room completes this top level with access to the enormous main deck. Downstairs there is a private media room, galley style kitchen with an island bench and walk in pantry along with open plan living/dining area. The living and kitchen area connect the to the alfresco making it a perfect space for entertaining.

Bedrooms	4
Bathrooms	2
Car Garage	2
<hr/>	
Total m²	326.88
Total sqs	35.19
Width (m)	8.8
Length (m)	20.15

327

hunterhomesnsw.com



Floor plan not drawn to scale

