

# HUNTER HOMES

live WITH HEART 



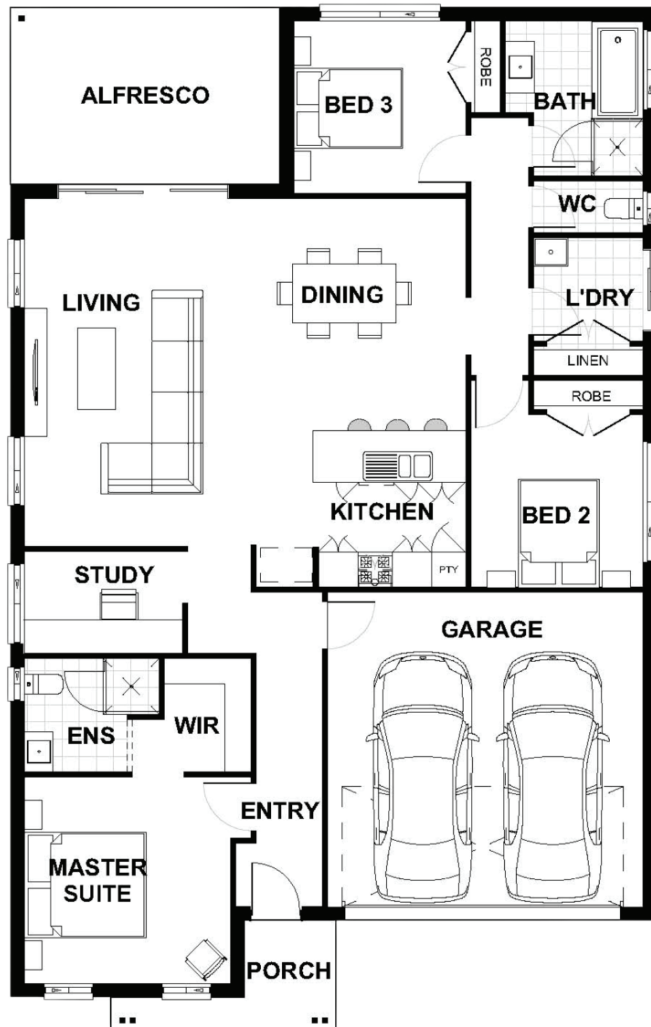
## WISEMAN FACADE



Total (sq.s.)	20.4	Width (m)	11.27
Total (m <sup>2</sup> )	189.49	Length (m)	17.87

### Description

The Dalwood 189 is designed to enhance the way you live, the Dalwood's clever floor plan is all about appealing spaces that draw the family together. The spacious heart of the home is as perfect for special occasions with guests as it is for cozy nights with family. This innovative design is perfect for a small block, featuring well-considered areas with natural connection and flow. The home has three bedrooms, two of which have been perfectly positioned nearby the family bathroom and laundry. The master suite comprises a walk through robe and ensuite, an ideal escape for parents at the end of a busy day. The Dalwood creates the perfect backdrop to relaxed, easy and hassle-free family living.



**Terms and Conditions:** Images shown on this brochure are approximate and for illustration purposes only, these plans may not be drawn to scale. Façades and other images on this brochure may be shown as optional upgrades or not included, additional fixtures and finishes that are featured on this document may not be included in the base cost such as landscaping, tiling, decking, furniture, feature lighting, pools, driveways etc. Hunter Homes reserves the right to change plans and inclusions at any time. All designs that are developed remain the property of Hunter Homes Pty Ltd under copyright law & we retain & claim all rights to these plans. Changing plans by 50% or more does not avoid legal responsibility for a copyright breach.

Dalwood 189

1300 BUY HOME

See our website for Display locations  
[www.hunterhomesnsw.com](http://www.hunterhomesnsw.com)

love YOUR HUNTER HOME