

# HUNTER HOMES

live WITH HEART 



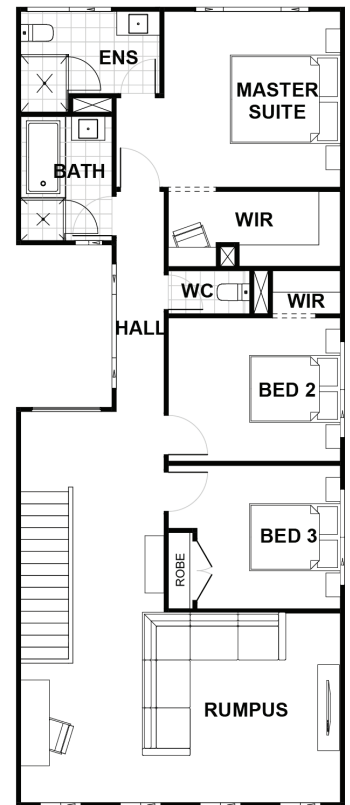
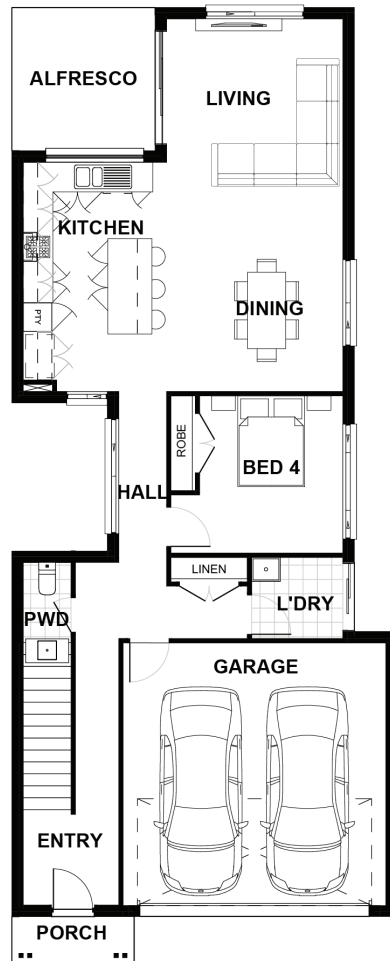
Jesmond 246



Total (sq.s.)	26.54	Width (m)	8.07
Total (m <sup>2</sup> )	246.54	Length (m)	20.05

## Description

A perfect design for a guest retreat, the Jesmond 246 is ideal for those looking for multiple sleeping zones. One the main level you will find a separate bedroom off the hallway leading to the open plan living and dining area which can be used as a guest room. The kitchen has been designed to maximise space and includes an island bench with a splashback window looking out to the alfresco drawing additional light. The second level includes three additional bedrooms with the master suite located towards the rear with a private ensuite and ginormous walk in wrap around wardrobe. On this level you will find a rumpus room which can be converted into another living area for the family to enjoy all year round.



**Terms and Conditions:** Images shown on this brochure are approximate and for illustration purposes only, these plans may not be drawn to scale. Façades and other images on this brochure may be shown as optional upgrades or not included, additional fixtures and finishes that are featured on this document may not be included in the base cost such as landscaping, tiling, decking, furniture, feature lighting, pools, driveways etc. Hunter Homes reserves the right to change plans and inclusions at any time. All designs that are developed remain the property of Hunter Homes Pty Ltd under copyright law & we retain & claim all rights to these plans. Changing plans by 50% or more does not avoid legal responsibility for a copyright breach.

1300 BUY HOME

See our website for Display locations  
[www.hunterhomesnsw.com](http://www.hunterhomesnsw.com)

love YOUR HUNTER HOME