

HUNTER HOMES

live WITH HEART 



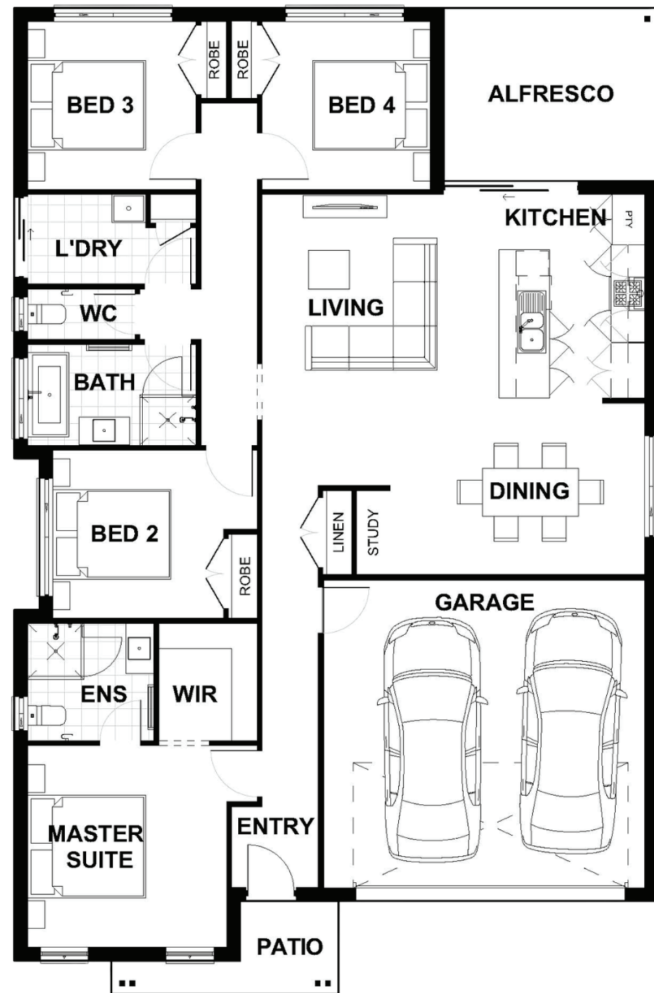
BOWMAN FACADE



Total (sqsq.)	20.51	Width (m)	11.49
Total (m ²)	190.57	Length (m)	17.62

Description

The Tahlee 190 has been cleverly designed to maximise space! The spacious master suite is situated at the front of the home with a large walk in robe and sizable ensuite. The remaining three bedrooms are located off the main living area and are tucked away to the side of the home surrounded by a large family bathroom. The open plan living has a substantial sized dining area with an integrated study. The stylish galley style kitchen with an island bench connects flawlessly to the alfresco area which is ideal for entertaining guests. The Tahlee 190 certainly maximises space and is the perfect home for a first home buyer and or investor alike.



Terms and Conditions: Images shown on this brochure are approximate and for illustration purposes only, these plans may not be drawn to scale. Façades and other images on this brochure may be shown as optional upgrades or not included, additional fixtures and finishes that are featured on this document may not be included in the base cost such as landscaping, tiling, decking, furniture, feature lighting, pools, driveways etc. Hunter Homes reserves the right to change plans and inclusions at any time. All designs that are developed remain the property of Hunter Homes Pty Ltd under copyright law & we retain & claim all rights to these plans. Changing plans by 50% or more does not avoid legal responsibility for a copyright breach.

1300 BUY HOME

See our website for Display locations
www.hunterhomesnsw.com

love YOUR HUNTER HOME

Tahlee 190