

THE ASHFORD

Pearson Facade

HUNTER
HOMES



208

THE ASHFORD

Pearson Facade

Description

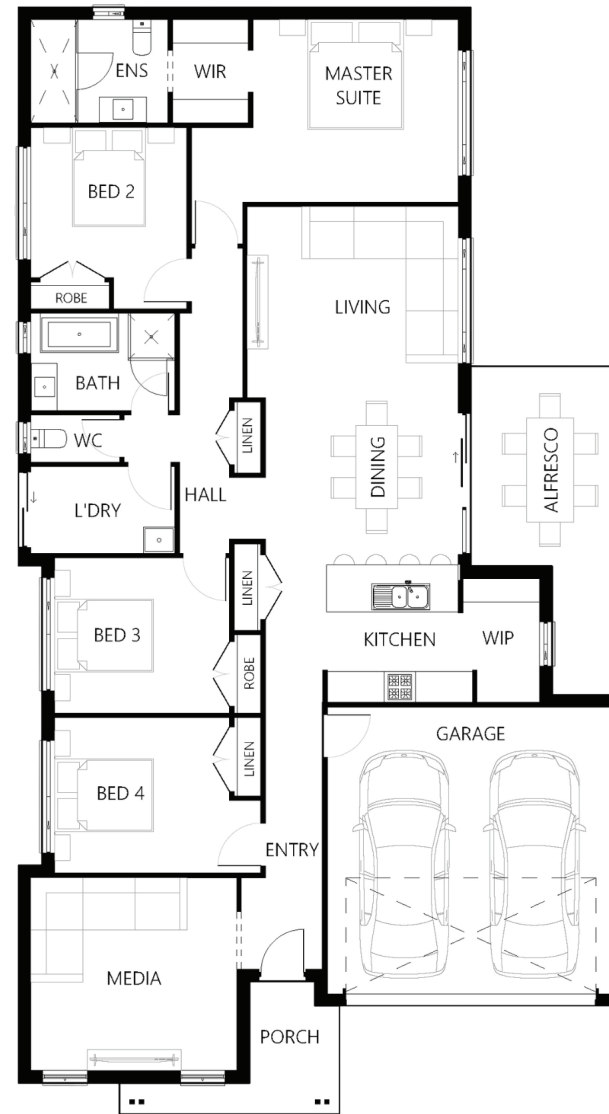
The Ashford 208 combines comfortable family living and effortless style. The family will love coming together for a meal in the open-plan living space, where the kitchen connects seamlessly with the living and dining areas. The flow to the alfresco extends the space and enhances this home with an effortless indoor-outdoor lifestyle. Located at the rear, the sanctuary of the master suite includes a walk-in robe and ensuite, giving parents a sense of privacy and retreat from the rest of the home. The remaining bedrooms give families endless opportunities in terms of space with multi-functional living options.

Bedrooms	4
Bathrooms	2
Car Garage	2

Total m²	208.23
Total sqs	22.41
Width (m)	11.67
Length (m)	21.25

208

hunterhomesnsw.com



Floor plan not drawn to scale

