

# THE VALENTINO

*Pelle Facade*

HUNTER  
HOMES



345

# THE VALENTINO

Pelle Facade

## Description

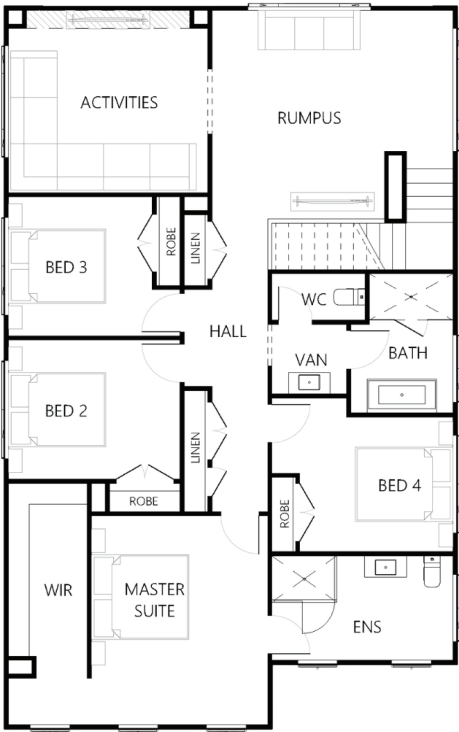
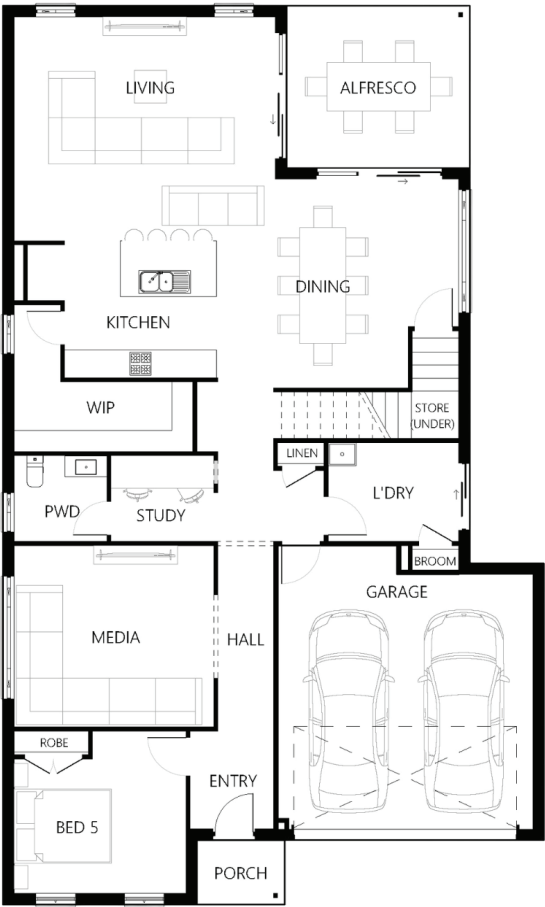
The Valentino 345 is a five bedroom masterpiece design. The top level of this home holds a grand master suite which has a spacious ensuite. Three bedrooms are also located on this level which surround the family bathroom. At the top of the stairs you will be led into a rumpus and activity room which is ideal for a growing family. The ground level has a private bedroom located off the entry which can be used as a guest wing with a Media room and open plan living/dining at the rear. The kitchen has an oversized island bench and walk-in pantry with the living and dining room both connecting to the alfresco area.

Bedrooms	5
Bathrooms	2
Car Garage	2

Total m²	345.49
Total sqs	37.19
Width (m)	11.66
Length (m)	19.38

345

[hunterhomesnsw.com](http://hunterhomesnsw.com)



Floor plan not drawn to scale

