

HUNTER HOMES

live WITH HEART 



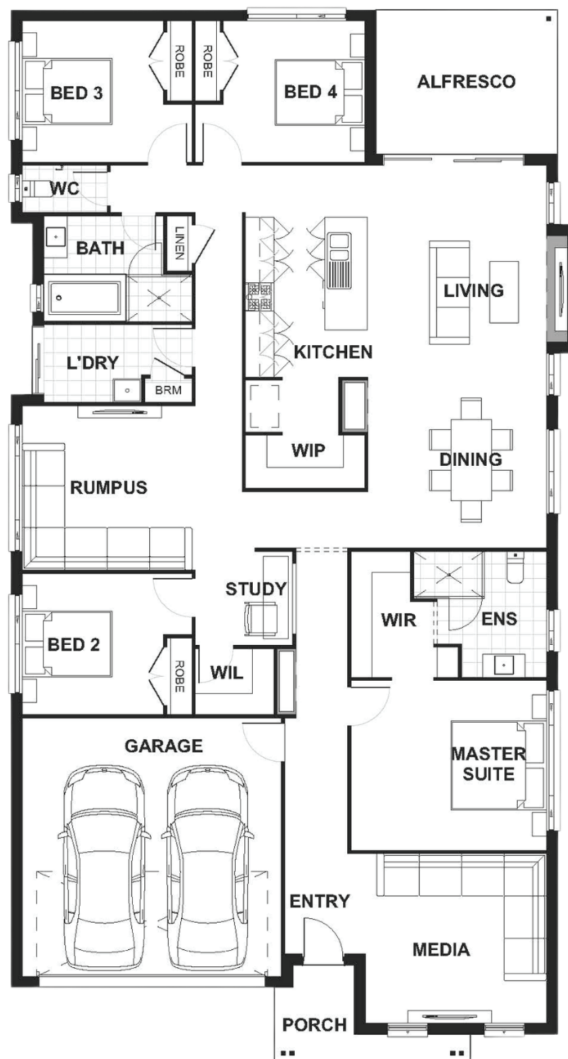
BOWMAN ALT FACADE



Total (sq.s.)	26.86	Width (m)	12.06
Total (m ²)	249.5	Length (m)	22.39

Description

The Barrington 249 has multiple living areas without feeling compact. The media room is located at the front of the home with the master suite located to the side, complete with a walk in robe and ensuite. With two additional rooms located towards the rear of the home, this allows close proximity to the living areas. The third bedroom is off the rumpus and comes with a study making this ideal for a teenage retreat. The kitchen is located adjacent to the living / dining area and has a walk-in pantry for plenty of storage. To maximise space the alfresco is joined to the living area allowing both indoor and outdoor living.



Terms and Conditions: Images shown on this brochure are approximate and for illustration purposes only, these plans may not be drawn to scale. Façades and other images on this brochure may be shown as optional upgrades or not included, additional fixtures and finishes that are featured on this document may not be included in the base cost such as landscaping, tiling, decking, furniture, feature lighting, pools, driveways etc. Hunter Homes reserves the right to change plans and inclusions at any time. All designs that are developed remain the property of Hunter Homes Pty Ltd under copyright law & we retain & claim all rights to these plans. Changing plans by 50% or more does not avoid legal responsibility for a copyright breach.

Barrington 249

1300 BUY HOME

See our website for Display locations
www.hunterhomesnsw.com

love YOUR HUNTER HOME