

# THE MANNING

*Hillsborough Facade*

HUNTER  
HOMES



255

# THE MANNING

Hillsborough Facade

## Description

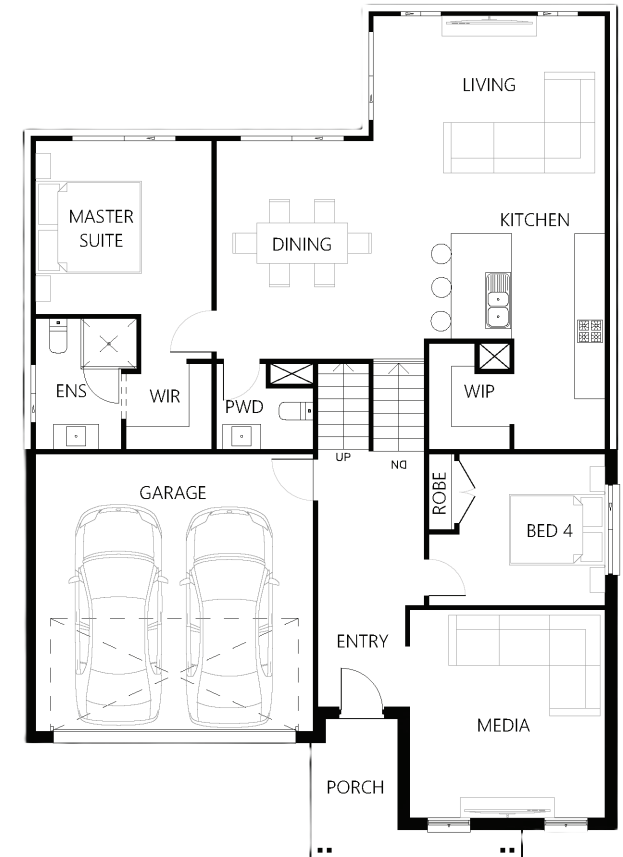
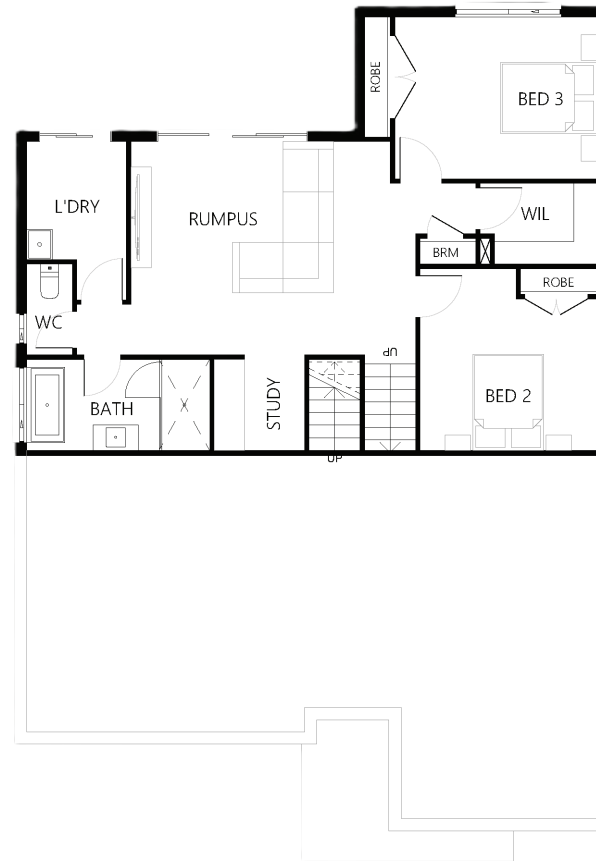
The Manning 255 is the ideal split-level design that perfectly complements downward sloping sites. The upper level is the ultimate place for the family to gather for meals, relax after dinner and take in the advantages of the elevated aspects that this design was created for. Here you will find the gourmet kitchen with hidden walk in pantry, open plan living and dining as well as a separate power room and the luxurious master suite with ensuite and walk in robe. To the front of this design you will find another bedroom and a spacious media room. Located downstairs there are two generous sized bedrooms, a study, and a lavish rumpus making this area the perfect kids zone, teenage retreat or guest wing.

Bedrooms	4
Bathrooms	2
Car Garage	2

Total m <sup>2</sup>	254.92
Total sqs	27.44
Width (m)	11.76
Length (m)	16.97

# 255

[hunterhomesnsw.com](http://hunterhomesnsw.com)



Floor plan not drawn to scale

