

THE LINTON

Quay Facade

HUNTER
HOMES



241

THE LINTON

Quay Facade

Description

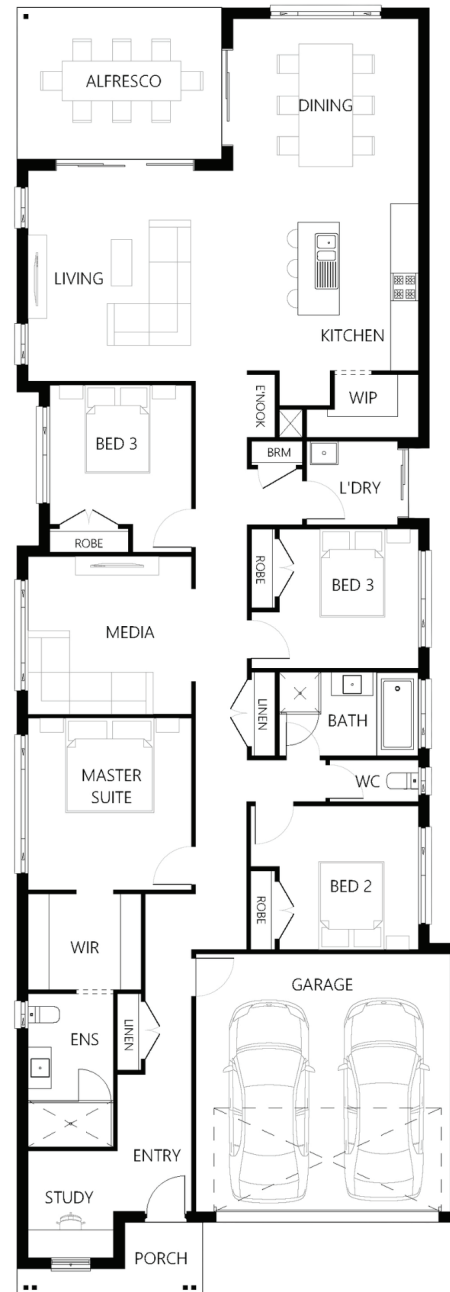
The Linton 241 is expertly designed for narrow lots. Everything you need is featured in this home, with a home office to the front, three bedrooms to the center of the home and a separate media room which can be converted to a kids activity room. A large open plan living, dining and entertaining area is featured at the rear of the house, which connects to the alfresco area. This home has a stylish kitchen with an island bench and walk-in pantry overlooking the open plan entertaining space. The master suite designed centrally has a walk through robe into a functional ensuite. The home is ideal for young families wanting to keep the children close or those looking to downsize with plenty of room for friends and family to visit.

Bedrooms	4
Bathrooms	2
Car Garage	2

Total m ²	241.61
Total sqs	26.01
Width (m)	9.6
Length (m)	27.8

241

hunterhomesnsw.com



Floor plan not drawn to scale

