

THE CHELSEA

Chelsea Wyee

HUNTER
HOMES



204

THE CHELSEA

Chelsea Wyee

Description

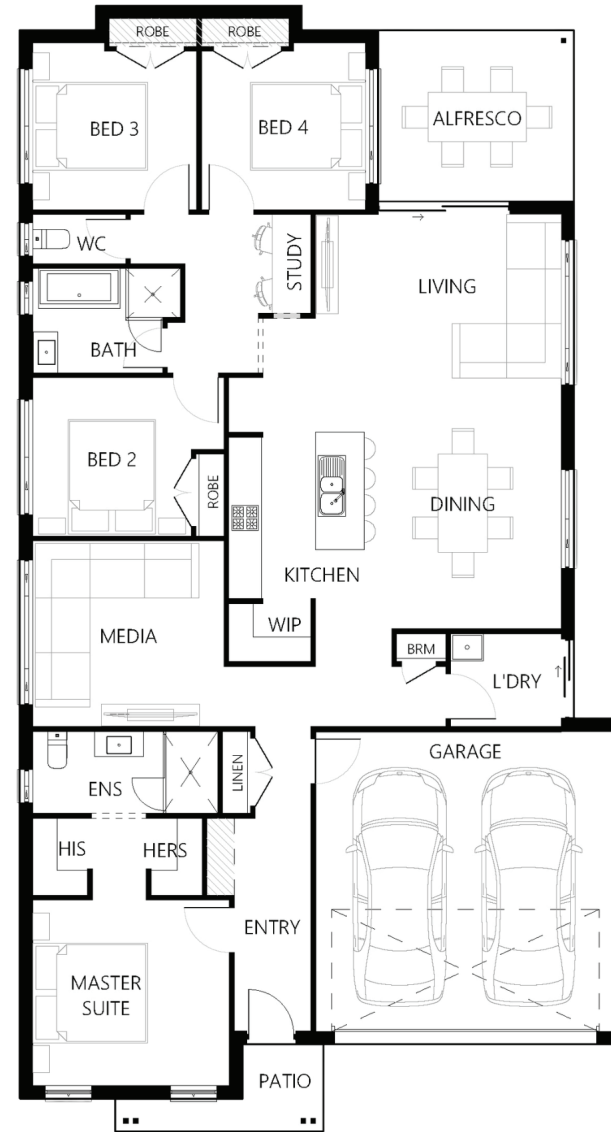
The Chelsea 204 has been designed to maximise space. The master suit is situated at the front of the home with a generous walk through his and her wardrobe leading into the ensuite. The media room is located off the entry hallway with the three remaining bedrooms located at the rear of the home, complete with family bathroom and study nook that can be closed off from the open plan living/dining. The galley style kitchen, with a walk in pantry and island bench, overlooks the dining and living area which opens to a great sized alfresco.

Bedrooms	4
Bathrooms	2
Car Garage	2

Total m ²	204.3
Total sqs	21.99
Width (m)	11.16
Length (m)	20.18

204

hunterhomesnsw.com



Floor plan not drawn to scale

