

# THE DALLEY

*Bowman Facade*

HUNTER  
HOMES



226

# THE DALLEY

Bowman Facade

## Description

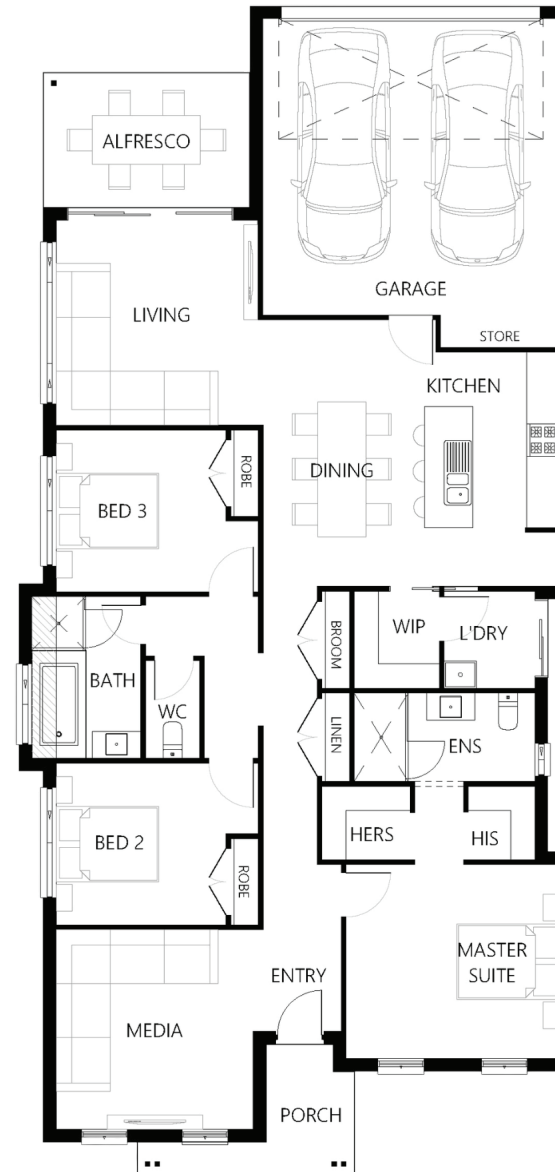
The Dalley 226 is a light-filled family sanctuary with rear lane access. The central kitchen, living and dining area allows for easy access to the breezy rear alfresco. The centrally located living area is perfectly positioned for Saturday night celebrations or Sunday brunches. This smartly designed home has front positioned media and master suite which boasts his and her robes and stylishly designed ensuite. The additional three bedrooms, all with robes, are centrally located to easily access the family bathroom and activities room. The Dalley 226 has everything you could want and need from a modern four bedroom home.

Bedrooms	4
Bathrooms	2
Car Garage	2

Total m <sup>2</sup>	226.19
Total sqs	24.35
Width (m)	10.26
Length (m)	24.41

# 226

[hunterhomesnsw.com](http://hunterhomesnsw.com)



Floor plan not drawn to scale

