

THE ROUCHEL

Bowman Facade

HUNTER
HOMES



217

THE ROUCHEL

Bowman Facade

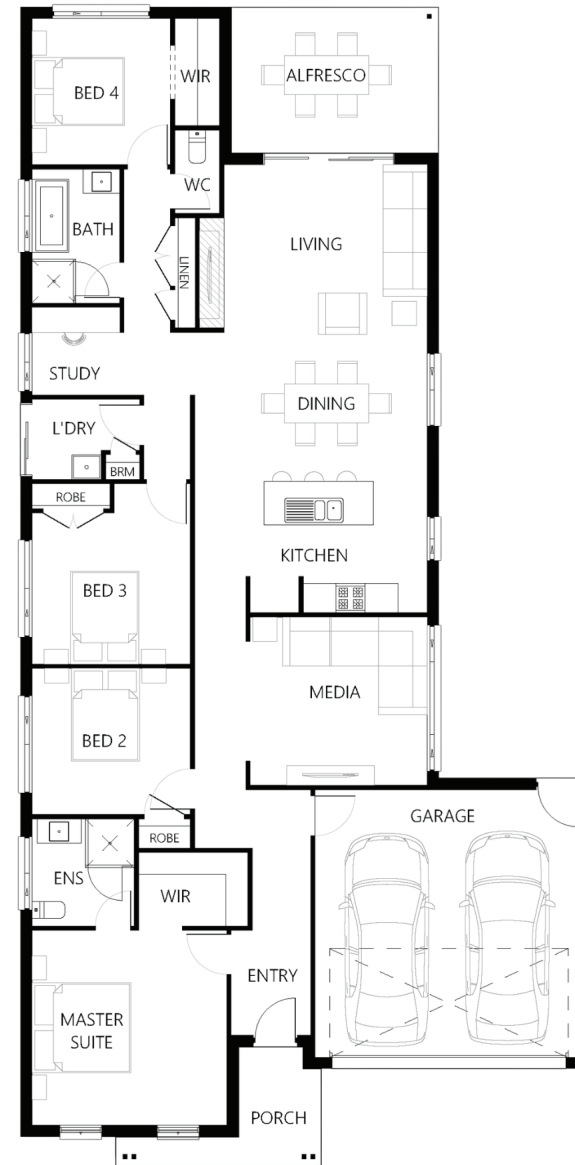
Description

Designed for narrow lots the Rouchel 217 is a great home for the new homeowner and or an empty nester looking to downsize. The master suite is located at the front of the home with a walk in robe and ensuite. The other three remaining bedrooms are located on the same side as the master along with a functional family bathroom. The home has a media room and study with a kitchen overlooking the dining/living area which is connected to the alfresco.

Bedrooms	4
Bathrooms	2
Car Garage	2
<hr/>	
Total m ²	217.54
Total sqs	23.42
Width (m)	11.79
Length (m)	23.8

217

hunterhomesnsw.com



Floor plan not drawn to scale

