

# THE STANFORD

*Hillsborough Facade*

HUNTER  
HOMES



202

# THE STANFORD

Hillsborough Facade

## Description

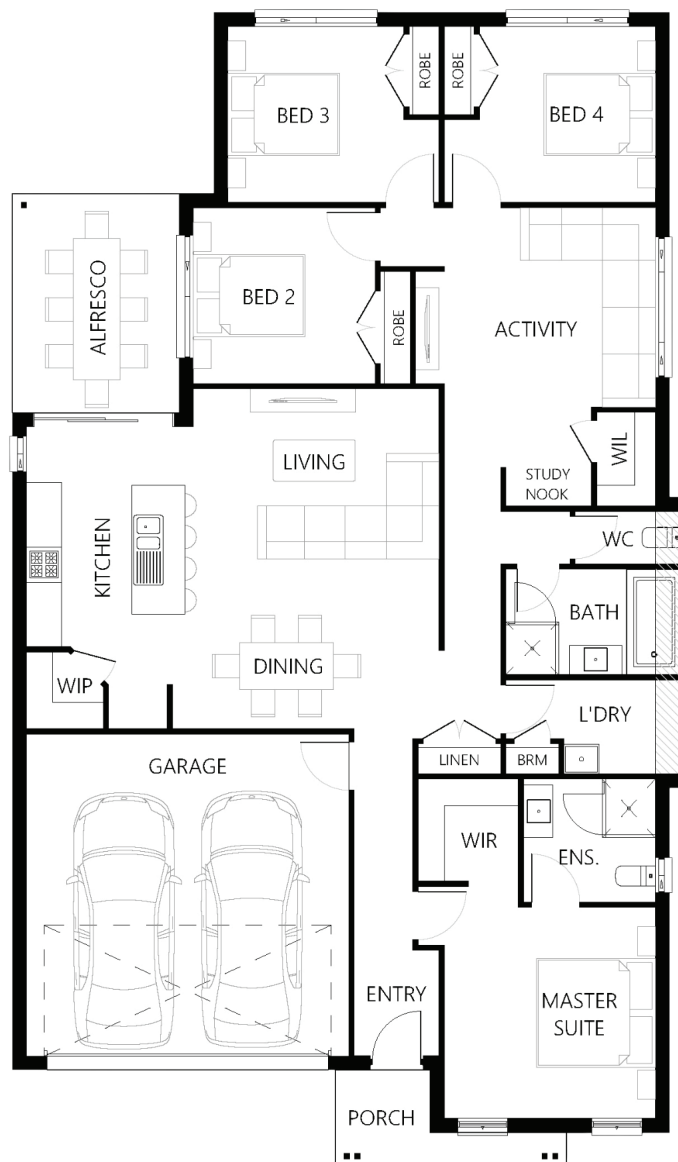
The Stanford 202 is a home that has been designed with families in mind and comes complete with a generous open plan living and spacious activities room. The master suit is situated at the front of the home with a walk in robe and a great size ensuite. The open plan living area is central to the home with a galley style kitchen with a walk-in pantry and island bench. This area connects to a versatile alfresco which is ideal for indoor and outdoor living. The remaining three bedrooms are located at the rear of the home which joins to the activity room making this the ultimate kids retreat with a practical study area included.

Bedrooms	4
Bathrooms	2
Car Garage	2

Total m <sup>2</sup>	202.29
Total sqs	21.78
Width (m)	11.66
Length (m)	19.71

# 202

[hunterhomesnsw.com](http://hunterhomesnsw.com)



Floor plan not drawn to scale

