

HUNTER HOMES

live WITH HEART 



HILLSBOROUGH FACADE

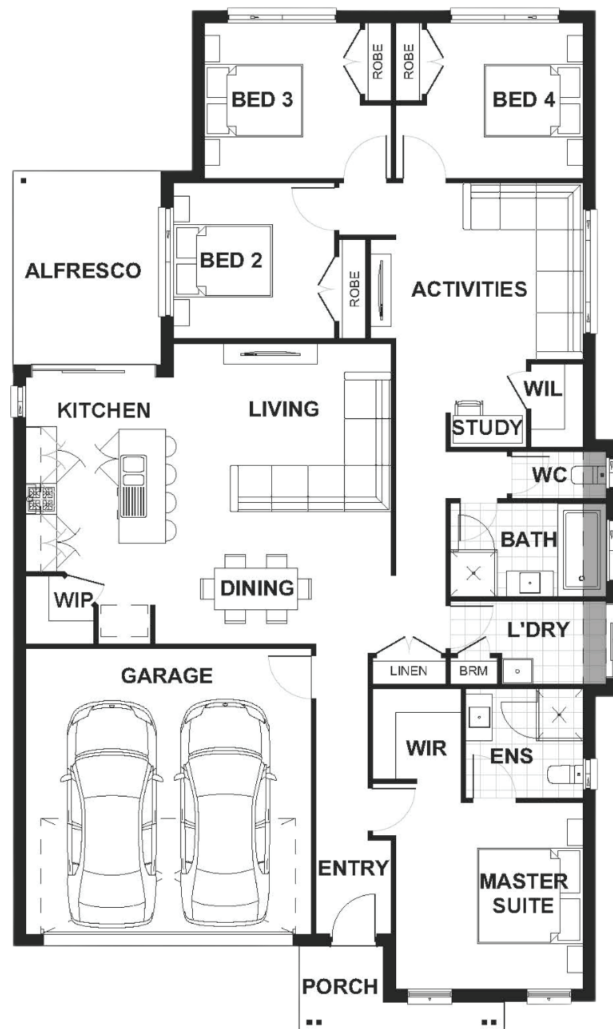


Total (sqsq.) 21.78 Width (m) 11.66

Total (m²) 202.29 Length (m) 19.71

Description

The Stanford 202 is a home that has been designed with families in mind and comes complete with a generous open plan living and spacious activities room. The master suit is situated at the front of the home with a walk in robe and a great size ensuite. The open plan living area is central to the home with a galley style kitchen with a walk-in pantry and island bench. This area connects to a versatile alfresco which is ideal for indoor and outdoor living. The remaining three bedrooms are located at the rear of the home which joins to the activity room making this the ultimate kids retreat with a practical study area included.



Terms and Conditions: Images shown on this brochure are approximate and for illustration purposes only, these plans may not be drawn to scale. Façades and other images on this brochure may be shown as optional upgrades or not included, additional fixtures and finishes that are featured on this document may not be included in the base cost such as landscaping, tiling, decking, furniture, feature lighting, pools, driveways etc. Hunter Homes reserves the right to change plans and inclusions at any time. All designs that are developed remain the property of Hunter Homes Pty Ltd under copyright law & we retain & claim all rights to these plans. Changing plans by 50% or more does not avoid legal responsibility for a copyright breach.

1300 BUY HOME

See our website for Display locations
www.hunterhomesnsw.com

love YOUR HUNTER HOME

Stanford 202 Front Master