

HUNTER HOMES

live WITH HEART 



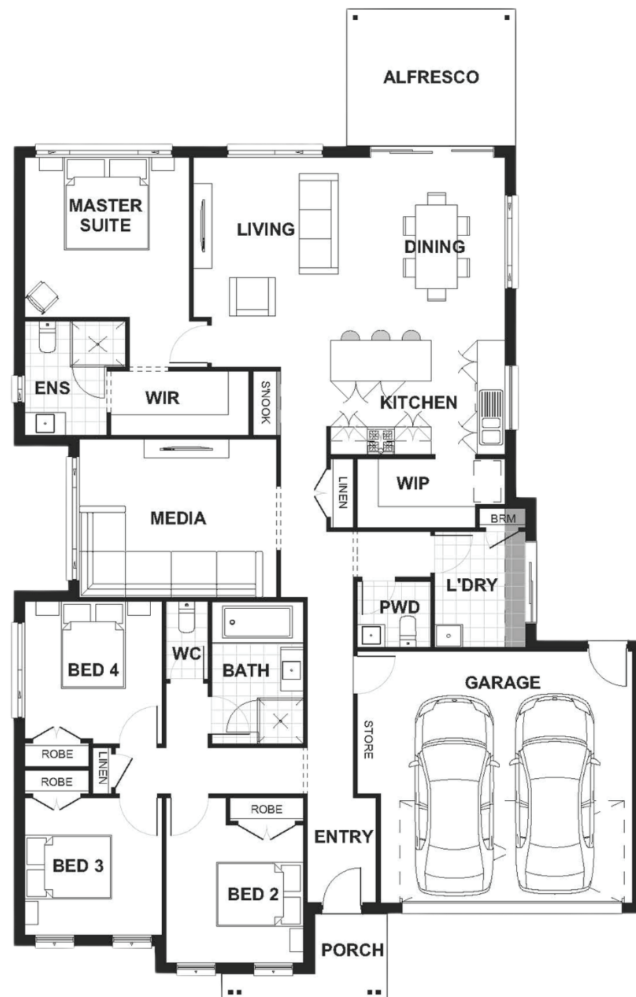
BELMORE FACADE



Total (sq.s.)	23.71	Width (m)	13.75
Total (m ²)	220.29	Length (m)	21.68

Description

The Cassa 220 is the perfect family home. The master suite is located at the rear of the home with a spacious walk in robe and ensuite. The three bedrooms are all located at the front of the home which create their own sleeping quarters and are connected to the family bathroom. The open plan dining and living area flow seamlessly to the large alfresco which allows for the perfect blend of both indoor and outdoor living. With a kitchen complete with an oversized island bench and a walk in pantry this home is an entertainers delight!



Terms and Conditions: Images shown on this brochure are approximate and for illustration purposes only, these plans may not be drawn to scale. Façades and other images on this brochure may be shown as optional upgrades or not included, additional fixtures and finishes that are featured on this document may not be included in the base cost such as landscaping, tiling, decking, furniture, feature lighting, pools, driveways etc. Hunter Homes reserves the right to change plans and inclusions at any time. All designs that are developed remain the property of Hunter Homes Pty Ltd under copyright law & we retain & claim all rights to these plans. Changing plans by 50% or more does not avoid legal responsibility for a copyright breach.

1300 BUY HOME

See our website for Display locations
www.hunterhomesnsw.com

love YOUR HUNTER HOME

Cassa 220