

HUNTER HOMES

live WITH HEART 



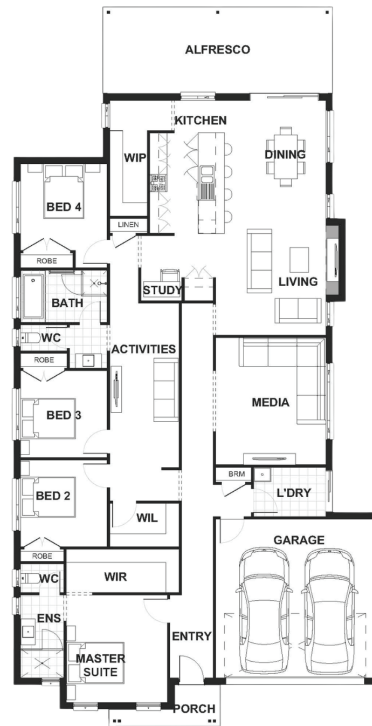
TUSCANY FACADE



Total (sqsq.)	28.21	Width (m)	12.75
Total (m ²)	262.06	Length (m)	24.93

Description

The Lovedale 262 is the ultimate four bedroom family home you have been searching for. From the expansive living area to the cleverly located bedrooms, every part of this home says 'luxury'. With a seamless flowing floor plan, complete with a separate living area, the use of space will continually inspire the way you live. The generous family and dining space draws family and guests to the light-filled heart of the home and out to the connected large alfresco. The rear of the home is dedicated to social areas taking in the stunning gourmet kitchen complete with walk-in pantry. The master suite creates a sanctuary with a generous walk-in robe and functional ensuite. Your teenagers will love their dedicated private wing with a study nook off the main living area. Three bedrooms, a children's activity room and a large family bathroom gives them plenty of space for alone time or to spend with friends.



Terms and Conditions: Images shown on this brochure are approximate and for illustration purposes only, these plans may not be drawn to scale. Façades and other images on this brochure may be shown as optional upgrades or not included, additional fixtures and finishes that are featured on this document may not be included in the base cost such as landscaping, tiling, decking, furniture, feature lighting, pools, driveways etc. Hunter Homes reserves the right to change plans and inclusions at any time. All designs that are developed remain the property of Hunter Homes Pty Ltd under copyright law & we retain & claim all rights to these plans. Changing plans by 50% or more does not avoid legal responsibility for a copyright breach.

1300 BUY HOME

See our website for Display locations
www.hunterhomesnsw.com

love YOUR HUNTER HOME

Lovedale 262