

THE ELLERTON

Wiseman Facade

HUNTER
HOMES



217

THE ELLERTON

Wiseman Facade

Description

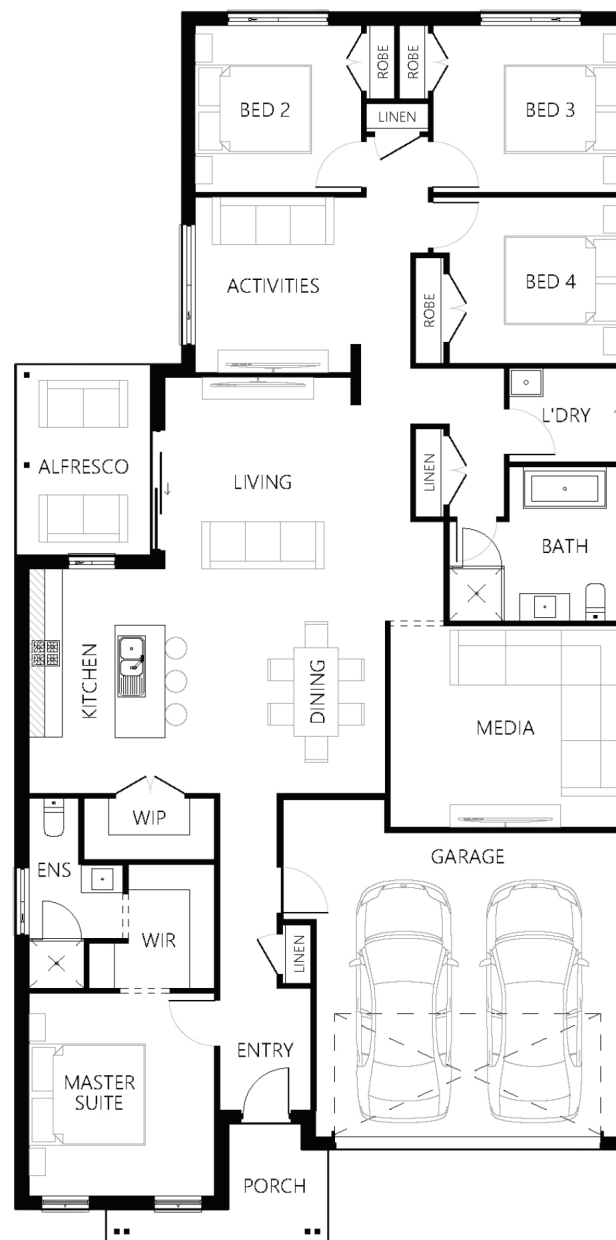
The Ellerton 217 offers various living options with a media and children's activity room including plenty of additional storage. This home creates a unique living experience with plenty of scope for multi-functional use. A well-appointed gourmet kitchen overlooks the spacious dining and living zones, which flow generously to the airy alfresco. The master suite, complete with luxury ensuite and walk-through robe, is located at the front of the home. The three remaining bedrooms are located at the rear. This is a home that will allow your family to grow in comfortably. Whether you are looking for functionality, privacy or more living space, the Ellerton has got you covered.

Bedrooms	4
Bathrooms	2
Car Garage	2

Total m²	218.16
Total sqs	23.48
Width (m)	11.15
Length (m)	22.19

217

hunterhomesnsw.com



Floor plan not drawn to scale

