

# HUNTER HOMES

live  
WITH HEART ♥

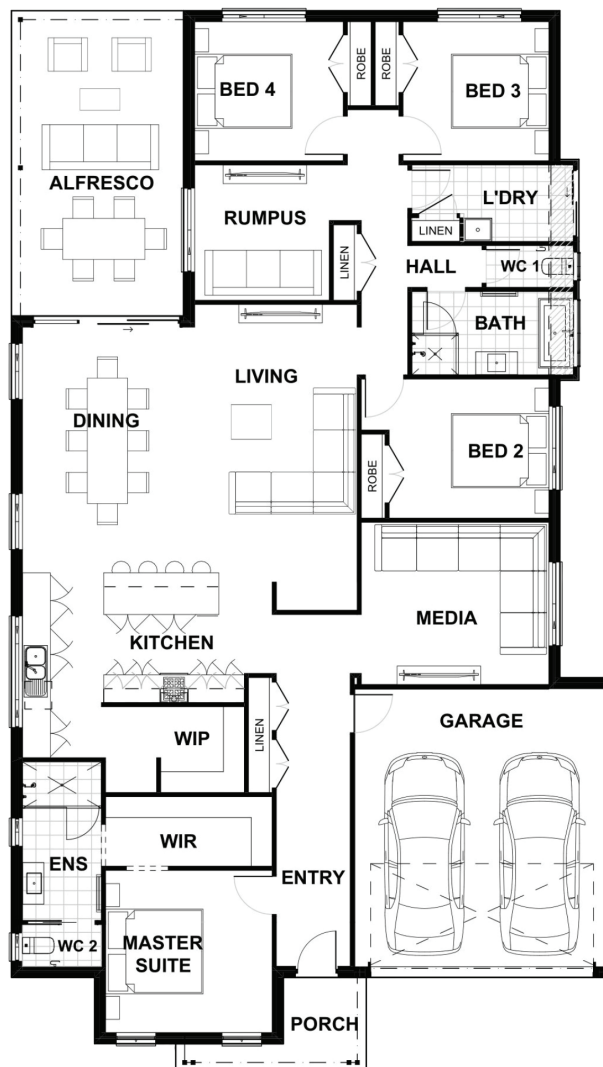
## MARYVALE FACADE



Total (sq.s.)	28.83	Width (m)	13.13
Total (m²)	267.84	Length (m)	22.89

### Description

The Mooring 259 combines all the essential elements of modern living to deliver a retreat in the comfort of your own home. The unique design unlocks endless possibility for your family's everyday lives with living spaces located in the center of the home, creating a true sense of rest and relaxation when it's time to find sanctuary in private spaces. The living and dining spaces along with the media room are all centrally located. The stunning gourmet kitchen, that features a generous island bench, is the ideal setting for everyday living. The grand master suite located at the front of the home creates the ultimate retreat-like vibe being separated from the rest of the home. Complete with a decadent ensuite and spacious walk-in robe, this lavish retreat is a well-earned reward at the end of the day. Kids will be equally ecstatic with their space. Three bedrooms and a large family bathroom provide a dedicated area for chilling and enjoying quiet time, with easy access to the alfresco and rumpus.



**Terms and Conditions:** Images shown on this brochure are approximate and for illustration purposes only, these plans may not be drawn to scale. Façades and other images on this brochure may be shown as optional upgrades or not included, additional fixtures and finishes that are featured on this document may not be included in the base cost such as landscaping, tiling, decking, furniture, feature lighting, pools, driveways etc. Hunter Homes reserves the right to change plans and inclusions at any time. All designs that are developed remain the property of Hunter Homes Pty Ltd under copyright law & we retain & claim all rights to these plans. Changing plans by 50% or more does not avoid legal responsibility for a copyright breach.

1300 BUY HOME

See our website for Display locations  
[www.hunterhomesnsw.com](http://www.hunterhomesnsw.com)

love YOUR  
HUNTER HOME

Mooring 259